

SUCOFINDO

Company Profile



PT SUCOFINDO (PERSERO) didirikan pada tahun 1956 sebagai perusahaan patungan antara pemerintah Republik Indonesia dengan SGS, Jenewa, Swiss.

SUCOFINDO adalah perusahaan inspeksi yang pertama di Indonesia yang bergerak di bidang jasa inspeksi, pengujian, sertifikasi, pelatihan, konsultasi, serta kini memiliki lebih dari 3.134 tenaga kerja profesional. Di dalam negeri, layanan kami tersebar di cabang, titik layanan dan laboratorium yang tersebar di seluruh Indonesia, sedangkan di pasar regional dan global kami bermitra dengan beberapa institusi dan perusahaan global.

PT SUCOFINDO (PERSERO) was established in 1956 as a joint venture company between the Government of the Republic of Indonesia and SGS, Geneva, Switzerland.

SUCOFINDO is the first inspection company in Indonesia engaged in inspection, testing, certification, training, and consultancy. Currently, we have more than 3.134 employees. Domestically, we serve through our branches, service points and laboratories that are widely spread in the country, and also have partnership with global companies and institutions as well as in global market.

Menghadirkan Pemastian

Assure Your Confidence

Selalu Menghadirkan Layanan yang Inovatif

Keep on creating innovative services

SAMS
*Smart Asset
Management System*



*Assurance Sustainability
Report*

F-MOS
*Fuel Management
Optimization System*



Komitmen SUCOFINDO terhadap inovasi tidak pernah berhenti. Sejak awal berdiri hingga saat ini, SUCOFINDO terus bertransformasi seiring perkembangan kebutuhan industri nasional maupun global. Inovasi layanan dilakukan tidak hanya melalui diversifikasi jasa, tetapi juga melalui integrasi teknologi terkini mutakhir dan fokus pada keberlanjutan.

SUCOFINDO's commitment to innovation has never ceased. From its early establishment to the present day, SUCOFINDO continues to evolve in response to the changing needs of national and global industries. Service innovation has been driven not only by diversification, but also by the integration of advanced technologies and a focus on sustainability

Memasuki dekade 2010-an, SUCOFINDO memperluas perannya di sektor hulu migas dengan membangun kapabilitas di bidang survei dan pemetaan. Pada tahun 2014, SUCOFINDO memperkuat lini jasa ini dengan melengkapi peralatan berteknologi tinggi seperti **Unmanned Aerial Vehicle (UAV)** untuk meningkatkan akurasi dan efisiensi akuisisi data di medan yang kompleks.

*In the early 2010s, SUCOFINDO expanded its role in the upstream oil and gas sector by enhancing its survey and mapping capabilities. In 2014, SUCOFINDO equipped its operations with high-precision tools such as **Unmanned Aerial Vehicles (UAVs)**, enabling more efficient and accurate data acquisition in complex terrains.*

Langkah ini menjadi fondasi penting bagi pengembangan sistem digital SUCOFINDO berikutnya, seperti **SAMS (Smart Asset Management System)** dan **F-MOS (Fuel Management Optimization System)** yang kini menjadi solusi unggulan di sektor energi dan infrastruktur. Di sisi keberlanjutan, SUCOFINDO juga memperkenalkan layanan "**Assurance Sustainability Report**" sebagai bentuk kontribusi nyata terhadap praktik bisnis yang lebih hijau dan bertanggung jawab.

*This advancement laid the groundwork for SUCOFINDO's latest digital systems, including **SAMS (Smart Asset Management System)** and **F-MOS (Fuel Management Optimization System)**, which are now flagship solutions in the energy and infrastructure sectors. On the sustainability front, SUCOFINDO introduced the **Assurance Sustainability Report** service to support more responsible and green business practices.*

Dengan sinergi antara pengalaman, teknologi, dan SDM bersertifikasi, SUCOFINDO terus memperkuat posisinya sebagai mitra pemastian yang andal dan relevan untuk masa depan industri yang lebih cerdas dan berkelanjutan.

Through the synergy of expertise, certified professionals, and modern technology, SUCOFINDO continues to strengthen its role as a trusted assurance partner in shaping a smarter and more sustainable industrial future.





Tak pernah berhenti melakukan inovasi dan terus mengembangkan bisnis baru, tahun 2014, SUCOFINDO merespon kebutuhan sektor hulu migas dengan membangun kapabilitas di bidang survei dan pemetaan pun diperkuat dengan melengkapi peralatan berteknologi tinggi seperti *Unmanned Aerial Vehicle* (UAV) termmodern.

Never ceasing to innovate and continue to develop new business, in 2014, SUCOFINDO responds to the needs of the upstream oil and gas sector by developing survey and mapping capabilities strengthened by equipping high-tech equipment such as the most modern Unmanned Aerial Vehicle (UAV).



Layanan SUCOFINDO kini mencakup sektor Pertanian, Kehutanan, Kelautan, Perikanan, Peternakan, Pertambangan (MIGAS dan Non MIGAS), Konstruksi, Industri Manufaktur, Transportasi, Teknologi Informasi, Energi Baru dan Terbarukan, serta mengembangkan kompetensinya secara berkelanjutan guna mendukung berbagai kebijakan strategis Pemerintah.

SUCOFINDO's services have now expanded into Agriculture, Forestry, Marine, Fishery, Livestock, Mining (Oil & Gas), Construction, Manufacturing, Transportation, Information Technology, New and Renewable Energy sectors as well as and continues to develop its competencies to support various strategic government policies.



Selama hampir tujuh dekade, SUCOFINDO telah memainkan peran penting dalam mendukung dunia usaha dan pemerintah melalui layanan pemastian yang profesional dan terpercaya. Dengan didukung oleh 3.134 tenaga profesional yang tersebar di 93 titik layanan di seluruh Indonesia, SUCOFINDO menjadi mitra strategis dalam memastikan kelancaran dan kepatuhan proses bisnis.

Layanan SUCOFINDO kini menjangkau delapan sektor strategis yang mencerminkan cakupan kapabilitas kami yang luas dan terintegrasi, yaitu: Sumber Daya Alam & Komoditi, Teknologi & Informasi, Informasi dan Telekomunikasi, Industri & Transportasi, Pemerintahan dan Perdagangan, Energi & Konstruksi, Pariwisata dan Keuangan, serta *Green Generation* & Kesehatan. Setiap sektor dilayani dengan pendekatan profesional, menggunakan standar nasional maupun internasional untuk memberikan solusi terbaik bagi klien kami.

Dengan lebih dari 142 jenis layanan di bidang inspeksi dan audit, pengujian dan analisis, sertifikasi, konsultansi, dan pelatihan, SUCOFINDO berkomitmen menjadi perusahaan pemastian terkemuka di kawasan ASEAN, serta terus berinovasi demi mendukung daya saing pelanggan dalam menghadapi tantangan industri dan regulasi global yang dinamis.

For nearly seven decades, SUCOFINDO has played a vital role in supporting businesses and the government through professional and trusted assurance services. With the support of 3.134 professionals spread across 93 service points throughout Indonesia, SUCOFINDO has become a strategic partner ensuring seamless operations and regulatory compliance.

SUCOFINDO's services now span eight strategic sectors, reflecting our broad and integrated capabilities, namely: Natural Resources & Commodities, Technology & Information, Information and Telecommunications, Industry & Transportation, Government and Trade, Energy & Construction, Tourism and Finance, as well as Green Generation & Health. Each sector is served with a professional approach, using both national and international standards to provide the best solutions for our clients.

With more than 142 types of services in inspection and audit, testing and analysis, certification, consultancy, and training, SUCOFINDO is committed to becoming a leading assurance company in the ASEAN region and continues to innovate to support our clients' competitiveness in facing dynamic industry and global regulatory challenges.

SUCOFINDO Mitra Anda Menuju Masa Depan Berkelanjutan Melalui Teknologi *Air Quality Monitoring System*

SUCOFINDO Your Partner Towards a Sustainable Future Through Air Quality Monitoring System Technology.





SUCOFINDO menghadirkan sistem pemantauan kualitas udara (***Air Quality Monitoring System***) sebagai bagian dari komitmen terhadap lingkungan dan keberlanjutan.

*SUCOFINDO introduces the **Air Quality Monitoring System** as part of its commitment to environmental responsibility and sustainability.*

Sistem ini memungkinkan pemantauan secara real-time atas parameter kualitas udara, seperti **PM2.5, PM10, NO₂, CO, SO₂, O₃**, serta kondisi meteorologi sekitar. Data yang dikumpulkan dapat digunakan untuk mendukung pengambilan keputusan, kepatuhan terhadap regulasi, serta penyusunan laporan keberlanjutan perusahaan.

*This system enables real-time monitoring of air quality parameters such as **PM2.5, PM10, NO₂, CO, SO₂, O₃**, along with local meteorological conditions. The collected data supports regulatory compliance, decision-making, and corporate sustainability reporting.*

Dengan keunggulan teknologi ini, SUCOFINDO memperkuat posisinya sebagai perusahaan jasa pemastian nasional yang bukan hanya terbesar dan terpercaya, tetapi juga adaptif terhadap tantangan perubahan iklim dan tuntutan industri global yang berkelanjutan.

Through this technological advancement, SUCOFINDO strengthens its position as the largest and most trusted national assurance service company—while remaining agile in addressing climate challenges and global demands for sustainable operations.



Daftar Isi

Table of Content

Menghadirkan Pemastian <i>Assure Your Confidence</i>	1
Selalu Memberikan Layanan yang Inovatif <i>Keep on Creating Innovative Services</i>	2
Jejak Langkah <i>Milestones</i>	12

14	Visi dan Misi <i>Vision and Mission</i>
15	Nilai Perusahaan <i>Corporate Value</i>
16	Keunggulan SUCOFINDO <i>SUCOFINDO Excellence</i>



18	Penghargaan <i>Awards</i>
20	Struktur Organisasi <i>Organization Structure</i>
22	Komisaris & Direksi <i>Board of Comissioner & Director's Profile</i>



24 **Peran SUCOFINDO Sebagai Mitra Anda**
SUCOFINDO As Your Partner

26 **Layanan Kami**
Our Services

28 **Peran SUCOFINDO Untuk Bisnis Hijau & Berkelanjutan**
SUCOFINDO's Role in Green and Sustainable Business



Peran SUCOFINDO Pada Proses Bisnis Pelanggan
SUCOFINDO's Role in Customers Business Process

29

Peran SUCOFINDO di Industri Halal
SUCOFINDO's Role in HALAL INDUSTRY

54

SUCOFINDO Technology
SUCOFINDO ROLE ON TECHNOLOGY INDUSTRY

56



Pelanggan Kami
Our Clients

60

Titik Layanan & Laboratorium
Service Point & Laboratory

62

Peta Layanan
Service Point Map

64



JEJAK LANGKAH

MILESTONE

1956

Pada tanggal 22 Oktober 1956, Pemerintah Republik Indonesia bersama Société Générale de Surveillance (SGS) mendirikan SUCOFINDO sebagai perusahaan inspeksi dan survei pertama di Indonesia. Pendirian ini menjadi tonggak awal peran SUCOFINDO dalam mendukung pembangunan nasional melalui layanan inspeksi, pengujian, dan sertifikasi dengan kepemilikan saham masing-masing 50%.

On October 22, 1956, the Government of the Republic of Indonesia, together with Société Générale de Surveillance (SGS), established SUCOFINDO as the first inspection and survey company in Indonesia. This establishment marked the beginning of SUCOFINDO's role in supporting national development through inspection, testing, and certification services, with each party holding a 50% share.

1956–1970

Di awal perjalanannya, SUCOFINDO dipercaya pemerintah untuk melakukan pemeriksaan impor barang-barang bantuan dari luar negeri di berbagai pelabuhan Indonesia. Pada tahun 1961, komposisi kepemilikan saham berubah menjadi 80% milik Negara Republik Indonesia dan 20% milik SGS. Selama periode ini, SUCOFINDO mengembangkan kapabilitas pemeriksaan di bidang produk pertanian serta melaksanakan verifikasi impor pupuk dan beras untuk memastikan kualitas dan ketepatan distribusi barang impor.

In the early years of its journey, SUCOFINDO was entrusted by the government to inspect imported aid goods arriving at various ports across Indonesia. In 1961, the ownership composition changed, with the Government of the Republic of Indonesia holding 80% of the shares and SGS holding 20%. During this period, SUCOFINDO expanded its inspection capabilities in the agricultural sector and carried out import verification for fertilizers and rice to ensure the quality and accurate distribution of imported goods.

1970–1979

Memasuki dekade berikutnya, SUCOFINDO memperluas kapabilitasnya ke sektor pertambangan dengan mulai melakukan pemeriksaan komoditas minyak dan gas bumi, batubara, dan mineral lainnya. Selain itu, SUCOFINDO mengembangkan layanan pemeriksaan di bidang pelayaran, sarana perdagangan, dan jasa keteknikan, memperkuat posisinya sebagai mitra strategis dalam mendukung berbagai sektor industri nasional.

Entering the next decade, SUCOFINDO expanded its capabilities into the mining sector by conducting inspections of oil and gas commodities, coal, and other minerals. In addition, SUCOFINDO developed inspection services in the fields of shipping, trade facilities, and engineering services, strengthening its position as a strategic partner in supporting various national industrial sectors.

1980–2000

Dalam periode ini, Pemerintah Indonesia meningkatkan kepemilikan saham di SUCOFINDO menjadi 95%, sedangkan SGS menjadi 5%. Sejalan dengan hal ini, pemerintah memberikan kepercayaan lebih kepada SUCOFINDO untuk melaksanakan pemeriksaan ekspor Indonesia, mendukung kelancaran perdagangan internasional, serta memastikan mutu produk ekspor Indonesia memenuhi standar global.

During this period, the Indonesian Government increased its ownership in SUCOFINDO to 95%, while SGS held 5%. In line with this, the government entrusted SUCOFINDO with greater responsibility in carrying out export inspections for Indonesia, supporting the smooth flow of international trade, and ensuring that the quality of Indonesian export products met global standards.



2000–2010

SUCOFINDO melaksanakan transformasi bisnis dan restrukturisasi organisasi secara menyeluruh untuk menjawab tantangan pasar yang semakin kompetitif. Melalui langkah ini, SUCOFINDO berhasil meningkatkan kinerja penjualannya, mencatatkan pertumbuhan pendapatan rata-rata di atas 6% per tahun selama periode 2003 hingga 2010, dan memperkuat perannya sebagai perusahaan inspeksi dan sertifikasi terdepan di Indonesia.

SUCOFINDO carried out a comprehensive business transformation and organizational restructuring to respond to an increasingly competitive market. Through this initiative, SUCOFINDO successfully improved its sales performance, recording an average revenue growth of over 6% per year during the period from 2003 to 2010, and strengthened its role as a leading inspection and certification company in Indonesia.

2010–2021

SUCOFINDO melakukan reformulasi bisnis dengan mengembangkan berbagai layanan dan jasa baru untuk mendukung kebutuhan industri nasional. SUCOFINDO mendirikan laboratorium Mineral Processing modern guna mendukung hilirisasi industri pertambangan di Indonesia. Dalam bidang sertifikasi produk elektronik dan kelistrikan, SUCOFINDO diterima sebagai anggota International Electrotechnical Commission Certification Body (IEC CB Scheme), memberikan nilai tambah bagi industri elektronik nasional, serta terus memperluas akreditasi untuk sertifikasi produk SNI.

SUCOFINDO reformulated its business by developing a wide range of new services to support national industry needs. The company established a modern Mineral Processing Laboratory to support Indonesia's downstream mining industry. In the field of electronics and electrical product certification, SUCOFINDO was accepted as a member of the International Electrotechnical Commission Certification Body (IEC CB Scheme), adding value to the national electronics industry while continuing to expand its accreditation in SNI product certification.

2021

Pada tanggal 17 Desember 2021, pemerintah secara resmi membentuk Holding BUMN Jasa Survei dengan diterbitkannya PP No. 66 Tahun 2021 dan pengalihan saham PT SUCOFINDO serta PT Surveyor Indonesia ke PT Biro Klasifikasi Indonesia (Persero). Pembentukan Holding ini memperkuat peran SUCOFINDO dalam memberikan layanan jasa survei yang terintegrasi dan berdaya saing global, mendukung upaya efisiensi dan optimalisasi layanan jasa survei nasional.

On December 17, 2021, the government officially formed the State-Owned Holding for Survey Services by issuing Government Regulation No. 66 of 2021, transferring shares of PT SUCOFINDO and PT Surveyor Indonesia to PT Biro Klasifikasi Indonesia (Persero). This holding formation strengthened SUCOFINDO's role in providing integrated, globally competitive survey services, supporting efforts to optimize and enhance the national survey service sector.

2025

Pada tahun 2025, SUCOFINDO resmi bergabung dalam Holding Operasional Badan Pengelola Investasi Daya Anagata Nusantara (Danantara Indonesia), sebuah Holding Operasional yang menaungi perusahaan-perusahaan di bidang TIC Indonesia. Langkah ini menjadi penanda penting dalam penguatan kapabilitas SUCOFINDO menuju akselerasi transformasi digital serta penguatan daya saing di tingkat nasional maupun global.

In 2025, SUCOFINDO officially joined the Operational Holding of the Daya Anagata Nusantara Investment Management Agency (Danantara Indonesia), an operational holding company overseeing TIC companies in Indonesia. This move marks an important step in strengthening SUCOFINDO's capabilities toward accelerating digital transformation and enhancing competitiveness at both national and global levels.

VISI DAN MISI

VISION AND MISSION



Menjadi Perusahaan Kelas Dunia yang kompetitif, andal dan terpercaya di bidang inspeksi, pengujian, sertifikasi, konsultasi dan pelatihan.

Become a World Class Company that competitive, effective and reliable in the field of inspection, testing, certification, consultancy and training.



Menciptakan nilai ekonomi kepada para pemangku kepentingan terutama pelanggan, pemegang saham dan karyawan melalui layanan jasa inspeksi, pengujian, sertifikasi, konsultasi serta jasa terkait lainnya untuk menjamin kepastian berusaha.

Create economic value to its stakeholders, especially our customers, shareholders and employees through the services of inspection, testing, certification, consulting and other service to guarantee certainty.

NILAI PERUSAHAAN

CORPORATE VALUE

AMANAHAH *TRUSTWORTHY*

Memegang teguh kepercayaan yang diberikan

Holding on to the trust given

HARMONIS *HARMONIOUS*

Saling peduli dan menghargai perbedaan

Caring for each other and respecting differences

ADAPTIF *ADAPTIVE*

Terus berinovasi dan antusias dalam menggerakkan ataupun menghadapi perubahan

Continuing to innovate and enthusiastic in moving or facing changes

KOMPETEN *COMPETENT*

Terus belajar dan mengembangkan kapabilitas

Continuing to learn and develop capabilities

LOYAL *LOYAL*

Berdedikasi dan mengutamakan kepentingan Bangsa dan Negara

Fully dedicated for prioritizing the interests of the Nation and the State.

KOLABORATIF *COLLABORATIVE*

Membangun kerjasama yang sinergis

Establishing a synergetic collaboration

KEUNGGULAN SUCOFINDO

SUCOFINDO EXCELLENCE



Jangkauan Layanan Luas dan Terintegrasi

Extensive and Integrated Service Network

SUCOFINDO memiliki lebih dari 92 titik layanan di seluruh Indonesia, termasuk kantor cabang dan laboratorium terakreditasi. Hal ini memastikan akses mudah, kecepatan respon, serta dukungan teknis langsung di lokasi strategis industri nasional.

SUCOFINDO has more than 92 service points throughout Indonesia, including branch offices and accredited laboratories. This ensures easy access, quick response times, and direct technical support at strategic locations within national industries.



Layanan TIC Terlengkap di Asia Pasifik

The Most Comprehensive TIC Services in Pacific Asia

Dengan lebih dari 142 jenis jasa, SUCOFINDO unggul dalam layanan *Testing, Inspection, Certification* (TIC) yang mencakup berbagai sektor dari migas, manufaktur, perdagangan, pertanian, hingga sektor halal dan teknologi informasi. Semua layanan dikembangkan sesuai standar nasional dan internasional.

With over 142 types of services, SUCOFINDO excels in Testing, Inspection, and Certification (TIC), covering various sectors from oil and gas, manufacturing, trade, agriculture, to halal and information technology. All services are developed in accordance with national and international standards.



Kapabilitas Profesional dan Inovatif

Professional and Innovative Capabilities

Didukung oleh 3.134 tenaga ahli bersertifikasi dan sistem berbasis teknologi mutakhir, SUCOFINDO terus berinovasi dalam menghadirkan solusi digital seperti *cybersecurity, monitoring IoT*, dan sistem enterprise. Sejak 2025, SUCOFINDO juga tergabung dalam ekosistem PT Danantara, memperkuat sinergi digital BUMN di Indonesia.

Supported by 3,134 certified experts and advanced technology-based systems, SUCOFINDO continuously innovates by providing digital solutions such as cybersecurity, IoT monitoring, and enterprise systems. Since 2025, SUCOFINDO has also been part of the Danantara ecosystem, strengthening the digital synergy of Indonesia's state-owned enterprises.

+ 20.000

PELANGGAN

Customers

68

**LABORATORIUM
TERINTEGRASI**

Integrated Laboratory

142

**JENIS
LAYANAN**

Type of Services

92

**TITIK LAYANAN
SUCOFINDO**

SUCOFINDO Office Point



PENGHARGAAN

AWARD 2023 - 2024



6 September, 2023

The Most Committed GRC Leader 2023

TOP GRC Award 2023 Penyelenggara: Majalah TOP BUSSINESS



6 September, 2023

TOP GRC Awards 2023 #5 Stars

TOP GRC Award 2023 Penyelenggara: Majalah TOP BUSSINESS



16 Juni, 2023

Peringkat 1 BUMN Kategori C Nilai Transaksi B2B PaDi UMKM Terbesar Tahun 2022

TOP GRC Award 2023 Penyelenggara: Majalah TOP BUSSINESS



7 Juni, 2023

TOP CSR Awards 2023 # STAR 5

TOP GRC Award 2023 Penyelenggara: Majalah TOP BUSSINESS



17 Maret, 2023

Internal Communication Management (Peringkat ke-3)

Global Youth Leadership Summit & Award 2023 Penyelenggara: Global Youth Parliament



7 Juni, 2023

TOP LEADER ON CSR COMMITMENT 2023

TOP CSR Award 2023 Penyelenggara: Majalah TOP BUSSINESS



29 November, 2024

Jobi Triananda -Direktur Utama PT SUCOFINDO

TOP 100 CEO 2024 Penyelenggara: Infobank



19 November, 2024

Industrial Service Category

INDONESIA – CHINA CHEMICAL INNOVATION & TECHNOLOGY AWARD 2024 Penyelenggara: Shanghai International Chemical Technology & Equipment Fair



3 Oktober, 2024

THE BEST STATE OWNED ENTERPRISE 2024

(Excellent Financial Performance 2023) Penyelenggara: The Asian Post



11 September, 2024

The GRC Awards 2024 #5 Stars

(Excellent Financial Performance 2023) Penyelenggara: The Asian Post



11 September, 2024

The Most Committed GRC Leader 2024

Jobi Triananda – Direktur Utama PT SUCOFINDO Penyelenggara: Majalah TOP BUSSINESS



11 September, 2024

TOP Golden Trophy 2024

TOP GRC Awards 2024 Penyelenggara: Majalah TOP BUSSINESS



10 September, 2024

Sertifikat Penghargaan Adi Niti

Kategori LPJP Amdal yang konsisten nama dan jumlah tenaga tetap bersertifikat KTPA/ATPA
Penyelenggara: Kementerian Lingkungan Hidup dan Kehutanan



30 Juli, 2024

Indonesia Green Leader for Green Orientation in improving sustainable Environmental Performance to Reduce Carbon Footprints

(Excellent Financial Performance 2023)
Penyelenggara: The Asian Post



10 Juli, 2024

Penghargaan Industri Penerima Lulusan SMK Terbanyak

Penyelenggara: Kementerian Perindustrian



20 Juni, 2024

Best Brand Popularity, Best Commercial Reputation, Best People Reputation in Survey Category

BUMN Brand Equity Awards 2024
Penyelenggara: The Economics



29 Mei, 2024

TOP Leader On CSR Commitment 2024

Jobi Triananda Direktur Utama PT SUCOFINDO
Penyelenggara: Majalah TOP BUSSINESS



29 Mei, 2024

TOP CSR Awards 2024 #5 Stars

TOP CSR Award 2024 Penyelenggara: Majalah TOP BUSSINESS



15 Mei, 2024

Dewi BUMN 2024 – Evi Afiatin

Dewi BUMN Awards 2024 Penyelenggara: MCorp Mettaverse



7 Maret, 2024

BCOMSS 2024

Kategori Sustainability, Community Involvement & Development (CID) Lingkungan Penyelenggara: BUMN Corporate omnicommunication and Sustainability Summit



7 Maret, 2024

Public Relation Indonesia Award 2024

Sektor anak usaha BUMN kategori kanal digital Sub Kategori Website Penyelenggara: PR Indonesia



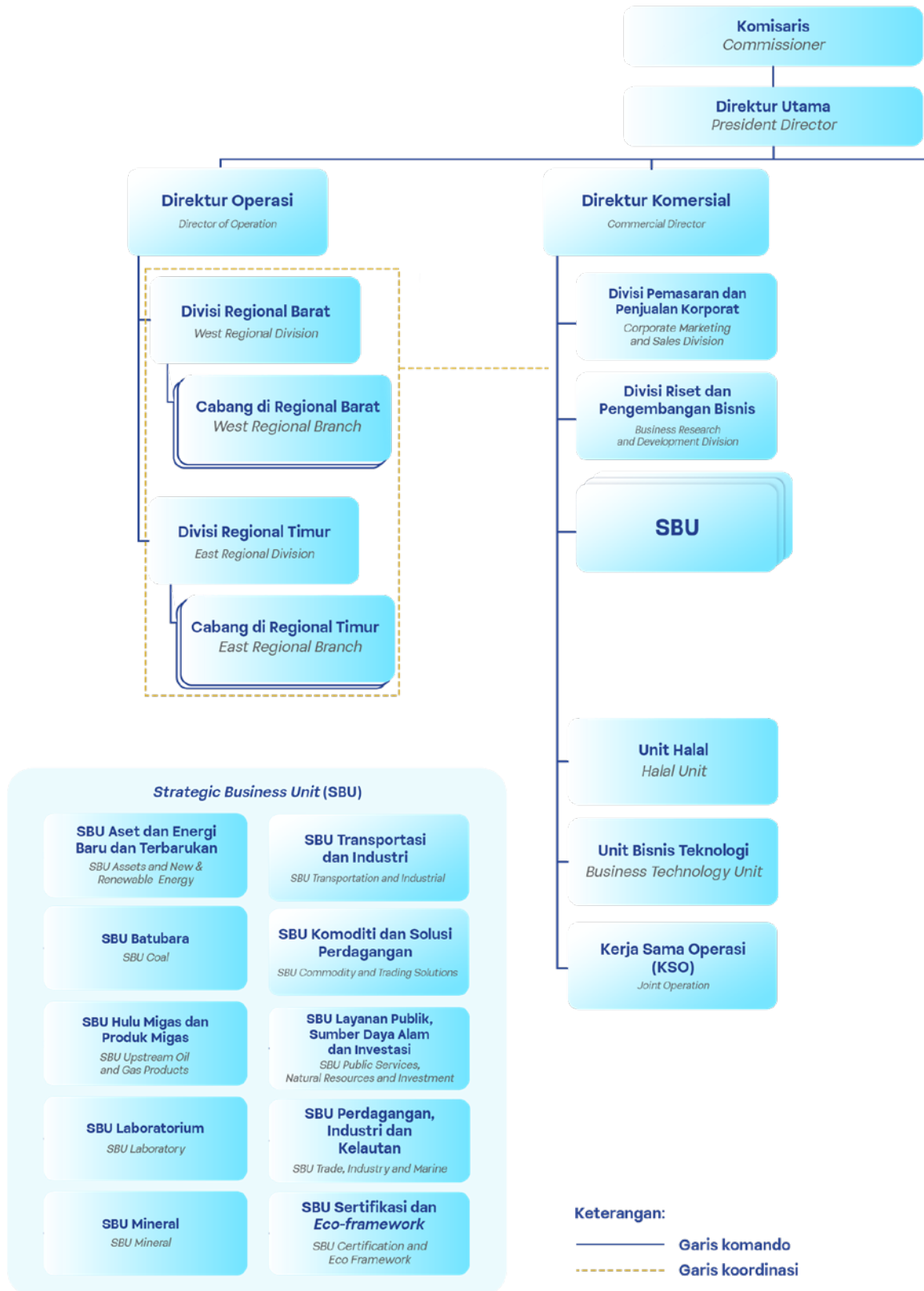
31 Januari, 2024

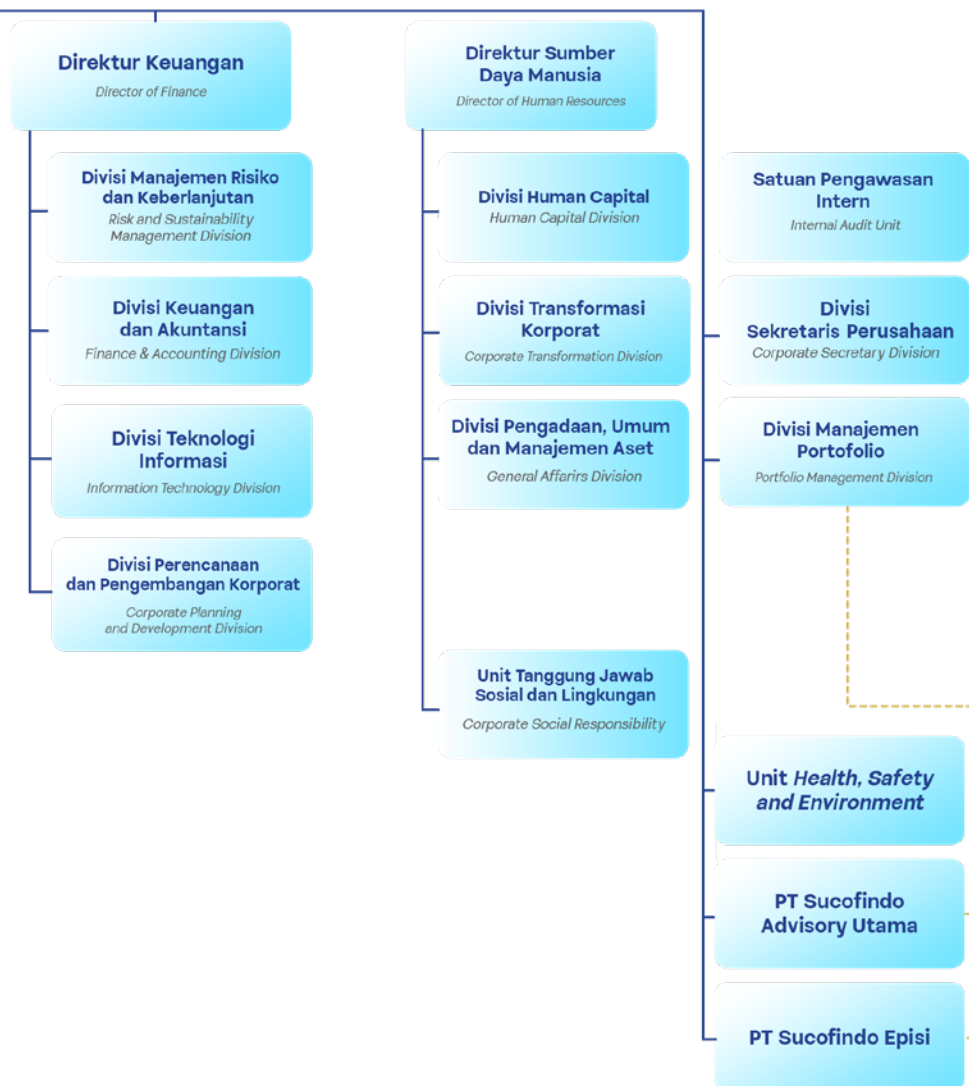
Living Legend Company 2024

Living Legend Company in Realizing Sustainable Business Practice Through Portfolio Management in Various Sector kategori Platinum Penyelenggara: Warta Ekonomi

STRUKTUR ORGANISASI

ORGANIZATION STRUCTURE





DEWAN KOMISARIS

Board of Commissioner's



DEWAN DIREKSI

Board of Director's





PERAN SUCOFINDO SEBAGAI MITRA ANDA

SUCOFINDO As Your Partner

Sebagai Pihak Ketiga

As Third Party

Sebagai pihak ketiga yang independen dan profesional, SUCOFINDO memastikan kepatuhan dan kualitas dalam setiap transaksi bisnis baik antara penjual dan pembeli, kreditur dan debitur, maupun importir dan eksportir. Melalui layanan inspeksi, pengujian, dan sertifikasi, kami membantu mitigasi risiko, pemenuhan regulasi, serta perlindungan lingkungan secara objektif dan terpercaya.

As an independent and professional third party, SUCOFINDO ensures compliance and quality in every business transaction between sellers and buyers, creditors and debtors, or importers and exporters. Through inspection, testing, and certification services, we support risk mitigation, regulatory compliance, and environmental protection with objectivity and trustworthiness.



Sebagai Pihak Kedua

As Second Party

Selain layanan sebagai pihak ketiga, SUCOFINDO juga mendukung perusahaan dan organisasi yang ingin fokus pada bisnis intinya melalui layanan alih daya proses bisnis. Layanan ini mencakup mitigasi risiko, pengendalian mutu (QA/QC), serta pemenuhan standar dan regulasi, termasuk aspek lingkungan hidup.

In addition to third party services, SUCOFINDO also supports companies and organizations seeking to focus on their core business through business process outsourcing. These services include risk mitigation, quality control (QA/QC), and compliance with standards and regulations, including environmental requirements. We also provide training and consultancy to enhance corporate capability and long-term compliance.

Layanan Kami

Our Services



Inspeksi dan Audit *Inspection and Audit*

Melalui jasa inspeksi dan audit yang independen kami membantu perusahaan memastikan bahwa produk, jasa, peralatan dan fasilitas yang dimiliki memenuhi persyaratan, standar, dan peraturan baik nasional maupun internasional.

We provide independent inspection and audit services to assist our clients, assuring that their products, services, equipment and facilities are in compliance with national or international requirements, standard, and regulation.

Pengujian dan Analisis *Testing and Analysis*

Kami menyediakan jasa pengujian dan analisis lengkap untuk membantu pelanggan dalam pemenuhan spesifikasi, ketentuan mutu dan keamanan produk.

We provide comprehensive testing and analysis services to help our clients to comply with product specification, quality, safety and regulations.



Sertifikasi *Certification*

Jasa sertifikasi kami membantu perusahaan untuk membuktikan komitmennya terhadap mutu produk, persyaratan lingkungan, keselamatan dan kesehatan kerja, tanggung jawab sosial serta ketentuan nasional dan internasional.

Our certification services facilitate companies to prove their compliance to standard requirements for product or service quality, environmental friendliness, occupational safety and health, corporate social responsibility, as well as national and international regulations.

Konsultasi *Consultancy*

Jasa konsultasi akan membantu perusahaan dalam meningkatkan kemampuan dan menjawab tantangan di bidang mutu, lingkungan, K3, dan produktifitas.

Our consultancy services help companies to improve capabilities in quality, environment, safety, and productivity.



Pelatihan Training

SUCOFINDO menyediakan pelatihan sistem manajemen mutu, lingkungan, K3, dan keamanan untuk meningkatkan kompetensi dan daya saing SDM perusahaan.

SUCOFINDO offers training in quality, environmental, OHS, and security management systems to improve employee competence and corporate competitiveness





SUCOFINDO

untuk Bisnis Hijau dan Berkelanjutan

SUCOFINDO for Green and Sustainable Business

Sebagai perusahaan jasa pemastian terbesar di Indonesia, SUCOFINDO berkomitmen untuk mendukung pelaku usaha dalam mewujudkan praktik bisnis yang ramah lingkungan dan berkelanjutan. Melalui layanan yang terintegrasi dan berbasis standar nasional maupun internasional, SUCOFINDO hadir dalam setiap tahapan transformasi menuju ekonomi hijau.

As the largest assurance services company in Indonesia, SUCOFINDO is committed to supporting businesses in implementing environmentally friendly and sustainable practices. Through integrated services based on national and international standards, SUCOFINDO plays an active role in every phase of the transition toward a green economy.

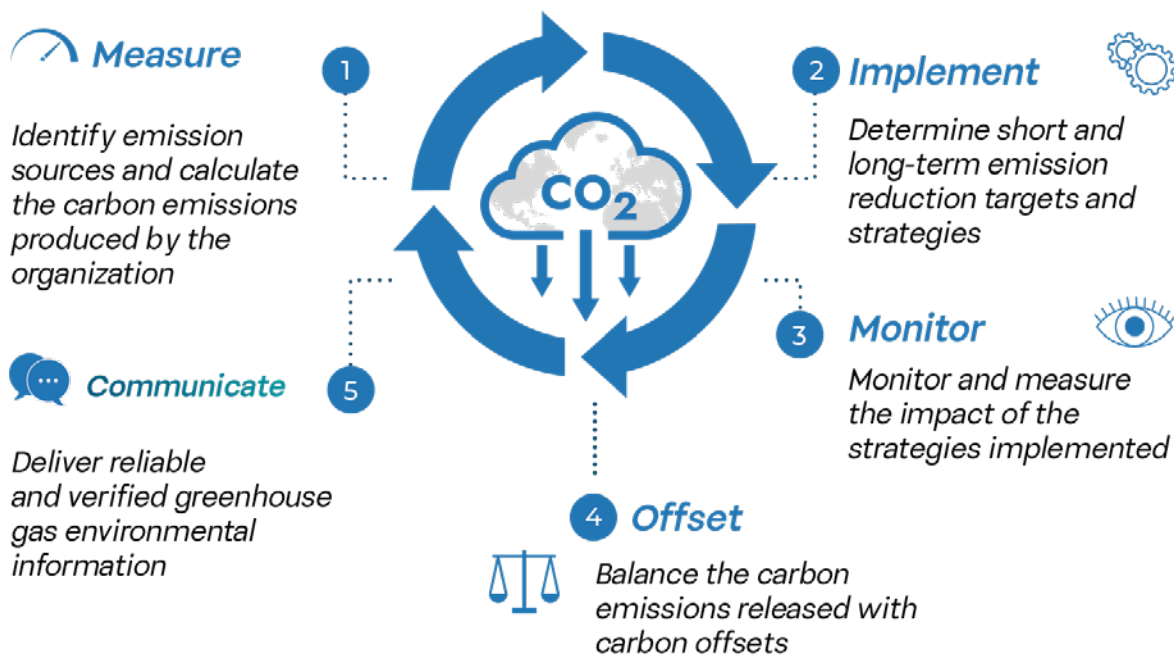
Layanan mencakup verifikasi dan validasi emisi GRK, audit lingkungan, penilaian kinerja PROPER, serta **Assurance Sustainability Report** untuk mendukung transparansi dan akuntabilitas perusahaan. SUCOFINDO juga mengembangkan teknologi seperti **Air Quality Monitoring System** dan sistem pemantauan limbah serta jejak karbon secara digital.

Our services include GHG emissions verification and validation, environmental audits, PROPER performance assessments, and Assurance Sustainability Reports to promote transparency and accountability. SUCOFINDO also develops technologies such as the Air Quality Monitoring System and digital solutions for monitoring waste and carbon footprints.

Dengan tenaga ahli bersertifikasi dan laboratorium berstandar internasional, SUCOFINDO memastikan bahwa keberlanjutan menjadi bagian dari proses bisnis klien, sejalan dengan visi pembangunan nasional yang inklusif dan ramah lingkungan.

With certified professionals and internationally accredited laboratories, SUCOFINDO ensures that sustainability becomes an integral part of our clients' business processes aligned with the national vision of inclusive and environmentally responsible development.

5 STEPS TO ACHIEVE NET ZERO EMISSIONS



Kami siap menjadi mitra strategis Anda dalam mengimplementasikan, mengukur, dan mencapai target keberlanjutan melalui solusi layanan SUCOFINDO *Green Generation*. Komitmen pemerintah untuk mencapai *Net Zero Emissions* memerlukan dukungan dari berbagai pihak, mulai dari sektor publik, swasta, hingga masyarakat. Kami meyakini bahwa keberlanjutan bukan sekadar biaya tambahan, melainkan sebuah peluang untuk meningkatkan nilai organisasi dan menjadi bagian dari strategi pertumbuhan jangka panjang.

We are ready to be your strategic partner to implement, measure and achieve sustainability targets through SUCOFINDO Green Generation service solutions. The government's commitment to achieving Net Zero Emissions requires support from various parties ranging from the public, private, and community sectors. We believe sustainability is not just an additional cost, but an opportunity to increase organizational value and part of a long-term growth strategy

NOT JUST FOR FULFILLING REGULATIONS

Keberlanjutan tidak hanya sebatas memenuhi kepatuhan terhadap regulasi, tetapi juga memberikan manfaat tambahan bagi organisasi, mulai dari peningkatan efisiensi, pengurangan biaya, pengurangan pajak, hingga optimalisasi operasional.

1. Meningkatkan efisiensi energi
2. Meningkatkan manajemen aset
3. Peluang keuntungan dari perdagangan karbon
4. Menurunkan biaya operasional dan pemeliharaan
5. Mewujudkan operasi yang berkelanjutan
6. Membangun citra merek organisasi

Not only does it meet sustainability regulatory compliance, but organizations can receive additional benefits, ranging from increased efficiency, reduced costs, lower taxes, and operational optimization

1. Improve energy efficiency
2. Improve asset management
3. Profit opportunities from carbon trading
4. Lower operating and maintenance costs
5. Creating sustainable operations
6. Creating an organization's brand image

PERAN SUCOFINDO PADA PROSES BISNIS PELANGGAN

SUCOFINDO's Role on Customers Business Process

Pra-Investasi & Perancangan
Pre-Investment and Planning



**Pembangunan dan
Pengadaan Sarana Prasarana**
*Development and Procurement of
Facility Infrastructure*

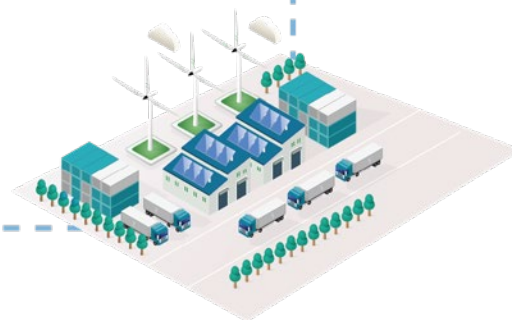


PERAN SUCOFINDO PADA PROSES BISNIS PELANGGAN

*SUCOFINDO'S ROLE ON
CUSTOMER'S BUSINESS
PROCESS*



**Perdagangan dan
Pengapalan**
Trading and Shipment



Produksi
Production

- **Sektor Generasi Hijau**
- **Sektor Energi**
- **Sektor Minyak & Gas**
- **Sektor Batubara**
- **Sektor Mineral**
- **Sektor Kelautan**
- **Sektor Pertanian**
- **Sektor Manufaktur**
- **Sektor Transportasi dan Logistik**
- **Sektor Pemerintahan**
- **Sektor Finansial**

Green Generation Sector
Energy Sector
Oil and Gas Sector
Coal Sector
Mineral Sector
Marine Sector
Agriculture Sector
Manufacture Sector
Logistic and Transportation Sector
Government Sector
Finance Sector



**PERAN SUCOFINDO
PADA SETIAP SEKTOR BISNIS**

SUCOFINDO's Role In Every Business Sector

Peran Sucofindo di

Sektor Generasi Hijau

SUCOFINDO's Role in Green Generation Sector



Melalui sektor Generasi Hijau, SUCOFINDO mendorong praktik bisnis yang bertanggung jawab dan berkelanjutan. Peran kami mencakup audit lingkungan, verifikasi emisi, penilaian PROPER, serta pendampingan dalam penerapan standar keberlanjutan seperti LVV 14065. Kami juga menawarkan pemantauan limbah dan jejak karbon secara digital untuk mendukung komitmen klien terhadap keberlanjutan lingkungan.

Through the Green Generation sector, SUCOFINDO promotes responsible and sustainable business practices. Our role includes environmental audits, emission verification, PROPER assessments, and support in implementing sustainability standards such as LVV 14065. We also provide digital waste and carbon footprint monitoring to support clients' environmental sustainability commitments.

1. Pre-Investment

1. AMDAL UKL-UPL, AMDAL Terperinci, DELH, DPLH dan Persetujuan Lingkungan // AMDAL UKL-UPL, Detailed AMDAL, DELH, DPLH, and Environmental Approval
2. Jasa Survei dan Riset (Data Analyst dan Surveyor) // Survey and Research Services (Data Analyst and Surveyor)
3. Jasa Kajian Lingkungan // Environmental Assessment Services
4. Sustainable Mining
5. Sustainability (Keberlanjutan) Berbasis Corporate Social Responsibility (CSR) // Sustainability Based on Corporate Social Responsibility (CSR)
6. Konsultansi di bidang EBT (Energi Baru Terbarukan) // Consultancy in Renewable Energy
7. EBA (Environmental Baseline Assessment)
8. ERA (Environmental Risk Assessment)

2. Production

1. Sertifikasi ISO 9001 // ISO 9001 Certification
2. Jasa Survei dan Riset (Data Analyst dan Surveyor) // Survey and Research Services (Data Analyst and Surveyor)
3. Sertifikasi SMK3 (PP 50-Kemenaker & ISO 45001) // SMK3 Certification (PP 50-Ministry of Manpower & ISO 45001)
4. Sertifikasi ISO 14001 (Sistem Manajemen Keamanan Lingkungan) // ISO 14001 Certification (Environmental Management System)
5. Sertifikasi ISO 31001 (Sistem Manajemen Keamanan Resiko) // ISO 31001 Certification (Risk Management System)
6. Jasa Perencanaan dan Kajian Teknis Air Bersih dan Limbah (Analisis Jejak Air/Water Footprint) // Clean Water and Waste Technical Planning and Study Services (Water Footprint Analysis)
7. Environmental, Social and Governance (ESG)
8. Greenbond
9. Manajemen Proyek // Project Management
10. QA/QC Engineering

4. Distribution

1. Jasa Survei dan Riset (Data Analyst dan Surveyor) // Product Certification
2. Sertifikasi SMK3 (PP 50 - Kemenaker & ISO 45001) // Energy Efficiency Certification / Minimum Energy Performance Standards
3. Sertifikasi ISO 20400 (Pedoman Pengadaan Berkelanjutan) // HACCP Certification
4. Sertifikasi ISO 28001 (Sistem Manajemen Keamanan Rantai Pasok) // GMP+ Certification
5. Sertifikasi ISO 14001 (Sistem Manajemen Keamanan Lingkungan) // Organic Farming Management System
6. Sertifikasi ISO 50001 (Sistem Manajemen Energi) // SMK3 Certification (PP 50 - Ministry of Manpower & ISO 45001)
7. Sertifikasi ISO 31001 (Sistem Manajemen Keamanan Resiko) // SMK3 Certification (Mining Safety Management System)
8. Sertifikasi Green and Smart Port // ISO 9001 Certification (Quality Management System)
9. Audit B3 // ISO 22000 Certification (Food Safety Management System)
10. Sertifikasi GGL (Green Gold Label) // Green Gold Label (GGL) Certification
11. Environmental, Social and Governance (ESG) // Environmental, Social, and Governance (ESG)
12. Greenbond
13. Analisis Daur Ulang (LCA) // Life Cycle Assessment (LCA)
14. Circular Economy



3. Production

1. Sertifikasi Produk // Product Certification
2. Sertifikasi Hemat Energi/Standar Kinerja Energi Minimum // Energy Efficiency Certification / Minimum Energy Performance Standards
3. Sertifikasi HACCP // HACCP Certification
4. Sertifikasi GMP+ // GMP+ Certification
5. Sistem Manajemen Pertanian Organik // Organic Farming Management System
6. Sertifikasi SMK3 (PP 50 - Kemenaker & ISO 45001) // SMK3 Certification (PP 50 - Ministry of Manpower & ISO 45001)
7. Sertifikasi SMK3 (Sistem Manajemen Keamanan Pertambangan) // SMK3 Certification (Mining Safety Management System)
8. Sertifikasi ISO 9001 (Sistem Manajemen Mutu) // ISO 9001 Certification (Quality Management System)
9. Sertifikasi ISO 22000 (Sistem Manajemen Keamanan Pangan) // ISO 22000 Certification (Food Safety Management System)
10. Sertifikasi ISO 37001 (Sistem Manajemen Anti Penyuapan) // ISO 37001 Certification (Anti-Bribery Management System)
11. Sertifikasi ISO 20400 (Pedoman Pengadaan Berkelanjutan) // ISO 20400 Certification (Sustainable Procurement Guidelines)
12. Sertifikasi ISO 28001 (Sistem Manajemen Keamanan Rantai Pasok) // ISO 28001 Certification (Supply Chain Security Management System)
13. Sertifikasi ISO 14001 (Sistem Manajemen Keamanan Lingkungan) // ISO 14001 Certification (Environmental Management System)
14. Sertifikasi ISO 50001 (Sistem Manajemen Energi) // ISO 50001 Certification (Energy Management System)
15. Sertifikasi ISO 31001 (Sistem Manajemen Keamanan Resiko) // ISO 31001 Certification (Risk Management System)
16. Audit B3 // Hazardous Waste (B3) Audit
17. Sertifikasi Green Building // Green Building Certification
18. Sertifikasi Industri Hijau // Green Industry Certification
19. Sertifikasi Indonesian Sustainability Palm Oil (ISPO) // Indonesian Sustainable Palm Oil (ISPO) Certification
20. Sertifikasi GGL (Green Gold Label) // Green Gold Label (GGL) Certification
21. RKL - RPL // IRKL - RPL (Environmental Management and Monitoring Plan)
22. Jasa Monitoring Pengelolaan Terpadu // Integrated Management Monitoring Services
23. Verifikasi dan validasi Gas Rumah Kaca / GRK // Greenhouse Gas (GHG) Verification and Validation
24. Environmental, Social and Governance (ESG)
25. Greenbond
26. Analisis Daur Ulang (LCA) // Life Cycle Assessment (LCA)
27. Ecolabel
28. Kajian Perencanaan dan Pengelolaan 3R // 3R (Reduce, Reuse, Recycle) Planning and Management Study
29. Circular Economy
30. Sampling, Analisis dan Monitoring Kualitas Air, Udara, Limbah, Biologi, & Mikrobiologi // Sampling, Analysis, and Monitoring of Water, Air, Waste, Biology, and Microbiology Quality
31. Sampling dan Analisa di bidang EBT (Gas Metana, Shale gas, Panas Bumi dan lainnya) // Sampling and Analysis in Renewable Energy (Methane Gas, Shale Gas, Geothermal, and others)

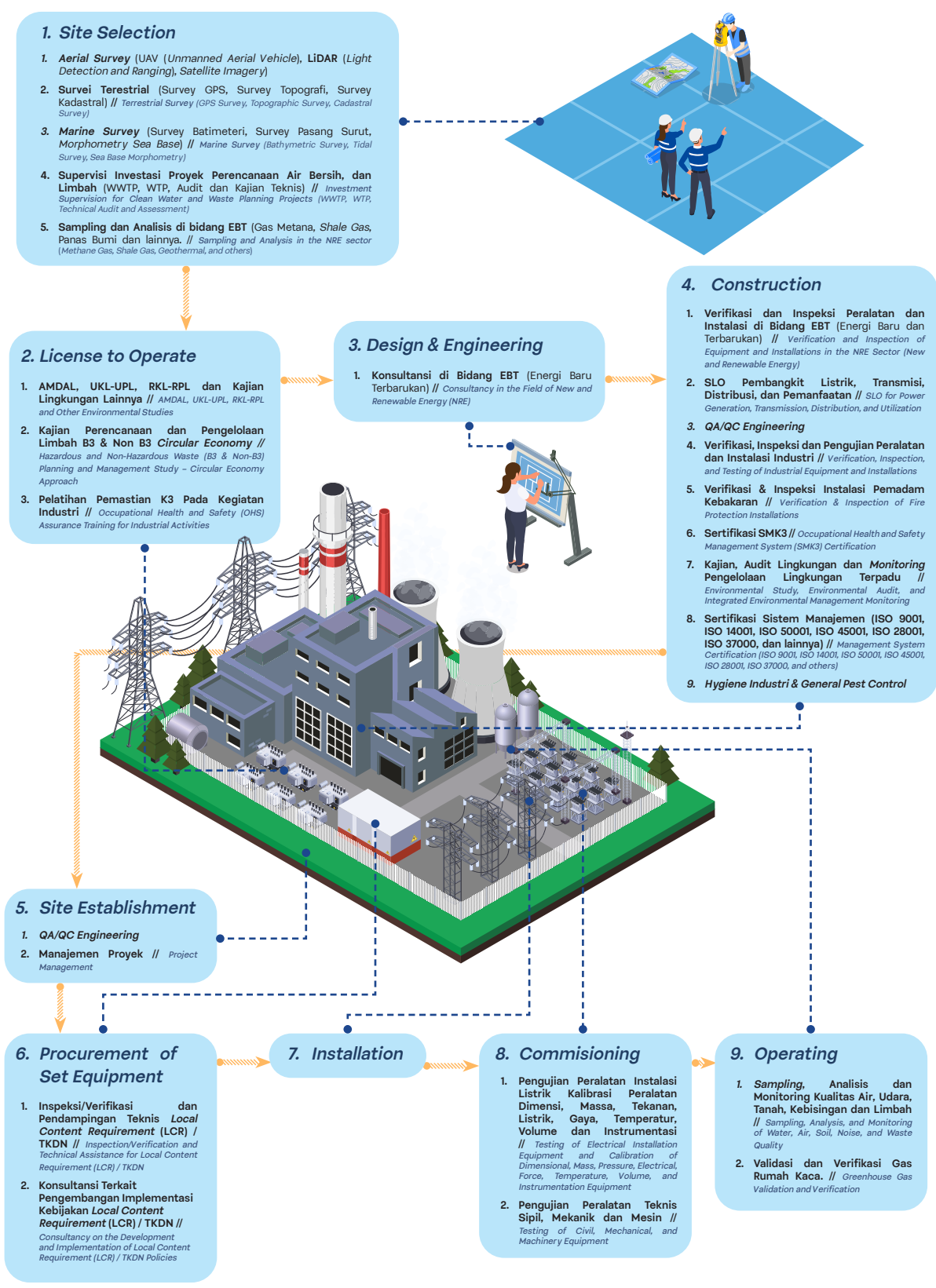
Peran Sucofindo di

Sektor Energi

SUCOFINDO's Role in Energy Sector

Di sektor energi, SUCOFINDO berperan sebagai mitra strategis dalam menjamin keselamatan dan kepatuhan operasional pada instalasi pembangkit, transmisi, hingga distribusi energi. Melalui layanan audit energi, sertifikasi sistem manajemen energi, serta pengujian pipa, bahan bakar, dan alat ukur, SUCOFINDO membantu perusahaan mengurangi risiko teknis sekaligus meningkatkan efisiensi dan keandalan operasional.

In the energy sector, SUCOFINDO acts as a strategic partner to ensure safety and regulatory compliance across power generation, transmission, and distribution facilities. Through energy audits, energy management system certifications, and testing of pipelines, fuels, and measuring instruments, SUCOFINDO helps reduce technical risks while enhancing operational efficiency and reliability.



PERAN SUCOFINDO DI

Sektor Minyak & Gas

SUCOFINDO ROLE IN OIL & GAS SECTOR

Investasi di sektor minyak dan gas meliputi kegiatan eksplorasi, eksploitasi, pengilangan, pengangkutan dan pemasaran produk-produknya. Selain peranannya sebagai salah satu sumber energi utama, minyak dan gas juga merupakan bahan baku untuk produk kimia, obat-obatan, pelarut, pupuk, pestisida dan plastik. Mengingat bahwa investasi pada sektor ini melibatkan modal besar, teknologi tinggi dan mengandung risiko besar secara finansial dan keselamatan manusia dan harta benda, maka diperlukan mitigasi risiko melalui pemenuhan berbagai persyaratan mutu, keselamatan, lingkungan serta ketentuan perundangan yang ada. SUCOFINDO memfasilitasi industri minyak dan gas dengan jasa-jasa yang terkait dengan kegiatan di hulu, hilir sampai distribusi.

The investment in oil and gas sector includes the exploration, exploitation, refining, transportation and marketing of its products. In addition to its role as one of the major sources of energy, oil and gas are also the raw materials for chemical products, pharmaceuticals, fertilizers, pesticides, and plastics. Since the investment in this sector involves huge capital, high technology and contains great financial and safety risks for the people, the risks need to be mitigated by ensuring compliance with various requirements of quality, safety, environment and provisions of existing legislation. SUCOFINDO facilitates oil and gas industry through the services associated with activities from upstream, midstream, downstream to distribution



1. Exploration and Mine Planning

1. Survei Seismik // Seismic Survey
2. Oil Field Services
3. Konsultasi Kehandalan dan Keamanan Peralatan dan Instalasi // Consultancy on Equipment and Installation Reliability and Safety
4. Keberlanjutan berbasis Corporate Social Responsibility // Sustainability Based on Corporate Social Responsibility (CSR)
5. Supervisi Investasi Proyek // Investment Supervision for Projects
6. Perencanaan Air Bersih dan Limbah // Clean Water and Waste Planning
7. Feasibility Study & Due Diligence
8. GIS Survey & Mapping

2. Construction

1. AMDAL, UKL-UPL, RKL-RPL
2. Jasa Verifikasi, Inspeksi dan Pengujian Peralatan dan Instalasi Industri // Verification, Inspection, and Testing Services for Industrial Equipment and Installations
3. Verifikasi & Inspeksi Instalasi Pemadam Kebakaran dan Penanggulangan Tanggap Darurat Kebakaran // Verification & Inspection of Fire Protection Installations and Emergency Fire Response Systems
4. Kaji Ulang Rancangan, Inspeksi, Pengujian, Pengawasan Konstruksi dan Audit Kelainan Infrastruktur // Design Review, Inspection, Testing, Construction Supervision, and Infrastructure Feasibility Audit
5. Kajian Perencanaan dan Pengelolaan Reduce-Reuse-Recycle-Recovery (Limbah B3 dan Non B3) dan Circular Economy // Study on Planning and Management of Reduce-Reuse-Recycle-Recovery (Hazardous and Non-Hazardous Waste) and Circular Economy
6. Verifikasi dan Pendampingan Teknis TKDN // Verification and Technical Assistance for TKDN (Local Content Requirement)
7. Pelatihan Pengukuran Minyak dan Pengendalian Kebocoran // Oil Measurement and Leakage Control Training



4. Shipping & Distribution

1. Kalibrasi Peralatan Custody Transfer dan Kalibrasi Tangki // Calibration of Custody Transfer Equipment and Tank Calibration
2. Quantity Assurance
3. Inspeksi Pra-Pengapalan (CISS/VPT/PCA/VOC/IVS) // Pre-Shipment Inspection (CISS/VPT/PCA/VOC/IVS)
4. Marine Cargo Survey
5. Fumigasi & Hygiene Industry // Fumigation & Industrial Hygiene
6. Jasa-jasa Kemaritiman // Maritime Services

3. Production

1. Inspeksi dan Survey Industri Minyak, Gas Alam, Produk Kilang dan Turunannya // Inspection and Survey of the Oil, Natural Gas, Refinery Products, and Derivatives Industry
2. Pengujian Blow Out Preventer // Blow Out Preventer Testing
3. Verifikasi dan inspeksi peralatan dan instalasi di bidang EBT (Energi Baru dan Terbarukan) // Verification and Inspection of Equipment and Installations in the New and Renewable Energy (NRE) Sector
4. QA/QC Engineering
5. Verifikasi dan Inspeksi Peralatan (Alat Angkat/Angkut, Bejana Tekan, Ketel Uap, Katup Pengaman, Pompa dan Kompresor, Tangki Timbun, Anjungan Lepas Pantai, Pipa Penyalur) // Verification and Inspection of Equipment (Lifting/ Handling Devices, Pressure Vessels, Boilers, Safety Valves, Pumps and Compressors, Storage Tanks, Offshore Platforms, and Pipelines)
6. NDT (Uji Tanpa Rusak) // Non-Destructive Test
7. Sertifikasi Laik Operasi (SLO) Pembangkit Listrik, Transmisi, Distribusi dan Pemanfaatan // Operational Worthiness Certification (SLO) for Power Generation, Transmission, Distribution, and Utilization
8. Manajemen Proyek // Project Management
9. Survey Riset (Kepuasan Pelanggan, Survey Pasar, Produk, dan turunannya) // Research Surveys (Customer Satisfaction, Market, Products, and Derivatives)
10. Sertifikasi Sistem Manajemen Mutu (ISO 9001) dan Sistem Manajemen (ISO 14001 - Sistem Manajemen Lingkungan, ISO 50001 - Sistem Manajemen Energi, ISO 45001 - SMK3, ISO 37000 - Sistem Manajemen Anti Penyuapan, dll.) // Quality Management System Certification (ISO 9001) and Other Management Systems (ISO 14001 - Environmental Management System, ISO 50001 - Energy Management System, ISO 45001 - Occupational Health and Safety Management, ISO 37000 - Anti-Bribery Management System, etc.)
11. Validasi dan Verifikasi Gas Rumah Kaca // Greenhouse Gas Validation and Verification
12. Audit Energi // Energy Audit
13. Kajian, Audit Lingkungan dan Monitoring Pengelolaan Lingkungan Terpadu // Environmental Study, Audit, and Integrated Environmental Management Monitoring
14. Sampling, Analisis dan Monitoring Kualitas Air, Udara, Tanah, Kebisingan, dan Limbah // Sampling, Analysis, and Monitoring of Water, Air, Soil, Noise, and Waste Quality
15. Sampling dan Analisis Gas, Petroleum, dan Produk turunannya // Sampling and Analysis of Gas, Petroleum, and Their Derivatives
16. Pengujian Peralatan Instalasi Listrik, Peralatan Teknik Sipil, Mekanik dan Mesin // Testing of Electrical Installation Equipment, Civil, Mechanical, and Machinery Equipment
17. Kalibrasi Peralatan Dimensi, Massa, Tekanan, Listrik, Gaya, Temperatur, Volume dan Instrumentasi // Calibration of Dimensional, Mass, Pressure, Volume and Instrumentation Equipment
18. SPARING (Sistem Pemantauan Kualitas Air Limbah Secara Terus Menerus dan Dalam Jaringan) // SPARING (Continuous and Online Wastewater Quality Monitoring System)

PERAN SUCOFINDO DI

SEKTOR BATUBARA

SUCOFINDO ROLE IN COAL SECTOR

Perdagangan mineral dan batubara semakin meningkat baik perdagangan domestik maupun internasional. Berbagai pihak yang terkait antara lain penyedia jasa transportasi, dan institusi terkait—membutuhkan dukungan dari pihak ketiga yang independen dan terpercaya untuk menjamin kesesuaian kuantitas serta kualitas barang.

Seiring dengan perkembangan kebutuhan dunia usaha, SUCOFINDO melakukan langkah inovatif dan kreatif dan menawarkan jasa-jasa berbasis kompetensinya yang berkaitan dengan industri pertambangan Batubara.

The increasing domestic and international coal and mineral product trades made various parties involved need service of independent body. Parties involved among others are producers, traders, exporters, importers, transporters, and institutions. Independent third party support is expected to be capable to give assurance quantity and quality of goods.

As the demands of the business world keeps on developing, SUCOFINDO has taken creative and innovative steps and offers competency-based services related to coal industry.



1. Exploration & Mine Planning

- Supervisi Investasi Proyek // *Project Investment Supervision*
- Jasa-jasa Manajemen Proyek // *Project Management Services*
- Kaji Ulang Rancangan (*Design review*) Verifikasi, Inspeksi, Pengujian, Pengawasan Konstruksi dan Audit Kelainan Infrastruktur // *Design Review, Verification, Inspection, Testing, Construction Supervision, and Infrastructure Feasibility Audit*
- Perencanaan Air Bersih dan Limbah (WWTP, WTP, Audit Air dan Kajian Teknis Instalasi Air Bersih dan Limbah) // *Clean Water and Wastewater Planning (WWTP, WTP, Water Audit, and Technical Assessment of Clean Water and Wastewater Installations)*
- Kajian Perencanaan dan Pengelolaan Reduce- Reuse-Recycle-Recovery (Limbah B3 dan Non B3) dan Circular Economy // *Study on Planning and Management of Reduce-Reuse-Recycle-Recovery (Hazardous and Non-Hazardous Waste) and Circular Economy*
- Feasibility Study & Due Diligence*
- Analisis Mengenai Dampak Lingkungan (AMDAL), UKL-UPL, *Environmental Social Impact Assessment, Environmental Base Line Analysis, Environmental Risk Assessment* // *Environmental Impact Analysis (AMDAL), UKL-UPL, Environmental and Social Impact Assessment (ESIA), Environmental Baseline Analysis, Environmental Risk Assessment*
- GIS Survey & Mapping*

2. Construction

- Jasa Verifikasi, Inspeksi dan Pengujian Peralatan dan Instalasi Industri (Alat Angkat/Angkut, Bejana Tekan, Boiler, Katup Pengaman, Pompa dan Kompresor, Tangki Timbun, Penyalur Petir, Kelistrikan, Generator) // *Verification, Inspection, and Testing Services for Industrial Equipment and Installations (Lifting and Handling Equipment, Pressure Vessels, Boilers, Safety Valves, Pumps and Compressors, Storage Tanks, Lightning Protection Systems, Electrical Systems, Generators)*
- Verifikasi, Inspeksi, Pengujian Instalasi Peralatan pemadam Kebakaran dan Penanggulangan Tanggap Darurat Kebakaran // *Verification, Inspection, and Testing of Fire Protection Equipment Installations and Emergency Fire Response Systems*
- Verifikasi Impor Barang Modal Dalam Keadaan Tidak Baru (BMTB) // *Verification of Imports of Non-New Capital Goods (BMTB)*
- Verifikasi dan Pendampingan Teknis TKDN // *Verification and Technical Assistance for TKDN (Domestic Component Level)*
- Sampling, Analisis dan Monitoring Kualitas Air Permukaan, Air Konsumsi, Air Limbah, Air Laut, Udara Ambient, Indoor Air Quality, Kebisingan, Emisi, Limbah Padat, B-3, Tanah Terkontaminasi, Biologi Lingkungan, dan Mikrobiologi // *Sampling, Analysis, and Monitoring of Surface Water, Drinking Water, Wastewater, Seawater, Ambient Air, Indoor Air Quality, Noise, Emissions, Solid Waste, Hazardous Waste (B3), Contaminated Soil, Environmental Biology, and Microbiology*
- Inspeksi, Supervisi dan Pengujian Produk Batubara (Mid - Stream) // *Inspection, Supervision, and Testing of Coal Products (Mid-Stream)*



4. Shipping & Distribution

- Kalibrasi Peralatan Custody Transfer dan Kalibrasi Tangki // *Calibration of Custody Transfer Equipment and Tank Calibration*
- Quantity Assurance*
- Inspeksi Pra-Pengapalan (CISS/VPTI/PCA/VOC/IVS) // *Pre-Ship Inspection (CISS / VPTI / PCA / VOC / IVS)*
- Marine Cargo Survey*
- Fumigasi & Hygiene Industry // *Fumigation & Industrial Hygiene*
- Jasa-jasa Marine (Kemaritiman): ISPS Code, On/Off Hire Survey, Towing dan Lashing Survey, Draught Survey, Container Inspection, Loss dan Damage Cargo Survey dan Investigation Survey // *Marine Services: ISPS Code, On/Off Hire Survey, Towing and Lashing Survey, Draught Survey, Container Inspection, Loss and Damage Cargo Survey, and Investigation Survey*

3. Production

- QA/QC Engineering*
- NDT (Uji Tanpa Rusak) // *NDT (Non-Destructive Test)*
- Sertifikasi Laik Operasi (SLO) Pembangkit Listrik, Transmisi, Distribusi dan Pemanfaatan // *Operational Worthiness Certification (SLO) for Power Generation, Transmission, Distribution, and Utilization*
- Jasa-jasa Manajemen Proyek // *Project Management Services*
- Sertifikasi Sistem Manajemen Mutu (ISO 9001) dan Sistem Manajemen (ISO 14001, ISO 50001, ISO 45001, ISO 28001, ISO 37000, dll) // *Quality Management System Certification (ISO 9001) and Other Management Systems (ISO 14001, ISO 50001, ISO 45001, ISO 28001, ISO 37000, etc.)*
- Environmental Monitoring* - Kajian, Audit Lingkungan dan Monitoring Pengelolaan Lingkungan Terpadu // *Environmental Monitoring - Environmental Study, Environmental Audit, and Integrated Environmental Management Monitoring*
- Environmental Baseline Studies*
- Analisa Daur Hidup/ LCA, Kinerja lingkungan dan *Environmental Social Governance/ESG* // *Life Cycle Assessment (LCA), Environmental Performance, and Environmental Social Governance (ESG)*
- Sustainability* (Keberlanjutan) Berbasis *Corporate Social Responsibility (CSR)* // *Sustainability Based on Corporate Social Responsibility (CSR)*
- Validasi dan Verifikasi Pernyataan Lingkungan (Gas Rumah Kaca /GRK, *Water Footprint, Eco Label, Analisa Daur Hidup/ LCA, Environmental Social Governance /ESG* // *Validation and Verification of Environmental Declarations (Greenhouse Gas/GHG, Water Footprint, Eco Label, Life Cycle Assessment/LCA, Environmental Social Governance/ESG)*
- Kajian, Audit Lingkungan dan *Monitoring Pengelolaan Lingkungan Terpadu* // *Environmental Study, Audit, and Integrated Environmental Management Monitoring*
- Audit Sistem Manajemen Keselamatan dan Kesehatan Kerja (SMK3) dan Sistem Manajemen Keamanan Pertambangan (SMKP) // *Occupational Health and Safety Management System (SMK3) and Mining Safety Management System (SMKP) Audit*
- Sampling, Analisis dan Monitoring Kualitas Air, Udara, Tanah, Kebisingan, dan Limbah // *Sampling, Analysis, and Monitoring of Water, Air, Soil, Noise, and Waste Quality*
- Pengujian Peralatan Instalasi Listrik, Peralatan Teknik Sipil, Mekanik dan Mesin // *Testing of Electrical Installation Equipment, Civil, Mechanical, and Machinery Equipment*
- Kalibrasi Peralatan Dimensi, Massa, Tekanan, Listrik, Gaya, Temperatur, volume dan Instrumentasi. // *Calibration of Dimensional, Mass, Pressure, Electrical, Force, Temperature, Volume, and Instrumentation Equipment*
- SPARING (Sistem Pemantauan Kualitas Air Limbah Secara Terus Menerus dan Dalam Jaringan) // *SPARING (Continuous and Online Wastewater Quality Monitoring System)*
- Acid Mine Drainage services*
- Rehabilitasi Daerah Aliran Sungai // *Watershed Rehabilitation*

PERAN SUCOFINDO DI

SEKTOR MINERAL

SUCOFINDO ROLE IN MINERAL SECTOR

SUCOFINDO mendukung industri pertambangan dengan memastikan kuantitas dan kualitas mineral, serta keseluruhan proses pertambangan melalui layanan inspeksi, supervisi, pengujian, dan konsultasi.

Bisnis pertambangan mineral memiliki risiko finansial yang tinggi karena melibatkan investasi dalam jumlah besar. Mulai dari risiko keselamatan hingga risiko lingkungan, semuanya perlu dikelola secara cermat sejak tahap eksplorasi hingga distribusi untuk menghindari kerugian besar.

Laboratorium mineral kami tersebar di berbagai wilayah Indonesia dan berada di lokasi strategis yang dekat dengan area pertambangan. Dengan teknologi terbaru, peralatan yang telah dikalibrasi, sistem preparasi yang mengacu pada standar nasional maupun internasional, serta tenaga ahli di bidangnya, kami berkomitmen untuk memberikan layanan terbaik.

SUCOFINDO supports the mining industry by ensuring the quantity and quality of minerals, and the overall mining process through inspection, supervision, testing, and consultancy services. The mineral mining business has great financial risks since it involves a large investment. From the safety risks to environmental risks, they need to be managed from the exploration to the distribution stage to avoid major losses.

Our mineral laboratories are spread throughout Indonesia and strategically close to the mining areas. With our latest technology and calibrated equipment, preparation systems that refer to national and international standards, and technical experts, we are committed to serve the best services.



1. Exploration & Mine Planning

1. Feasibility Study & Due Diligence Tambang // Feasibility Study & Due Diligence Mining
2. Measurement of Mine Reserves
3. X-Ray Fluorescence Analysis
4. Mineral Assay & Analysis
5. Sediment and Soil Analysis
6. GIS Mapping
7. Design review Verifikasi, Inspeksi, Pengujian, Pengawasan Konstruksi dan Audit Kelainan Infrastruktur // Design Review, Verification, Inspection, Testing, Construction Supervision, and Infrastructure Feasibility Audit.

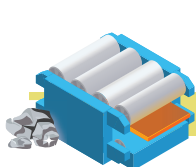


2. Mining

1. Mining Equipment Inspection & Maintenance
2. Asset Integrity Management
3. QA/QC Engineering
4. Project Management
5. Pengujian Bahan Tambang & Kesuburan Tanah // Mineral Testing & Soil Fertility Analysis
6. Witnessing Bahan Tambang // Witnessing of Mineral Materials
7. Pengujian Kualitas Udara, Air, Kebisingan, dan Limbah // Air, Water, Noise, and Waste Quality Testing
8. Verifikasi & Inspeksi Instalasi Peralatan Pemadam Kebakaran // Verification & Inspection of Fire Protection Equipment Installations

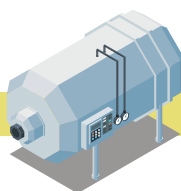


3. Mineral Processing



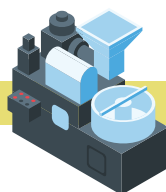
Crushing

- » Witnessing Processing Metallurgy
- » Mineral and



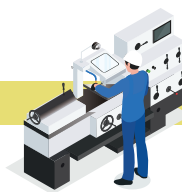
Grinding

- » Hardness & Grinding test
- » Abrasion Test
- » SAG Mill Testing



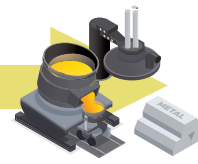
Classification

- » Gravity Separation Test



Concentration/ Extraction

- » Inspection & Supervision of Mineral and Metallurgy

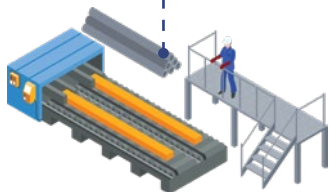


Smelting

- » Plans and Physical Progress Verification of Smelter Construction

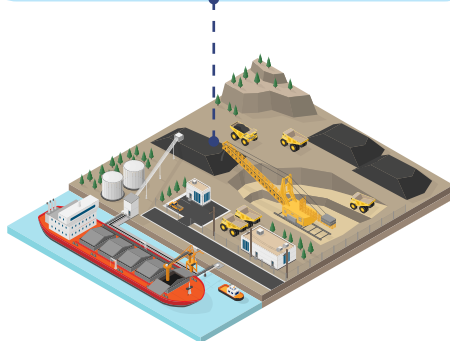
4. Manufacturing

1. Non-Destructive Testing (NDT)



5. Shipping & Distribution

1. Draught Surveys
2. Hold Cargo Cleanliness Inspections
3. Cargo Loading/Unloading Supervision
4. On and Off Hire Surveys
5. Independent Ship/Cargo Damage and Repair Surveys
6. Pre-Shipment Inspection
7. General Pest Control
8. Inspeksi Pra-Pengapalan (CISS/VPTI/PCA/VOC/IVS) // Pre-Shipment Inspection (CISS / VPTI / PCA / VOC / IVS)



6. Reclamation

1. Acid Mine Drainage services
2. Watershed rehabilitation



PERAN SUCOFINDO DI

SEKTOR KELAUTAN

SUCOFINDO ROLE IN MARITIME SECTOR

SUCOFINDO dengan pengalaman dan keahliannya hadir sebagai mitra untuk memastikan sektor kelautan kita berkembang dengan standar kualitas yang tinggi, berkelanjutan, dan aman. Laut adalah aset yang harus dijaga. SUCOFINDO menawarkan rangkaian layanan khusus yang dirancang untuk memastikan operasi kelautan berjalan dengan baik, aman, dan sesuai dengan standar internasional. Dari pemeriksaan kapal hingga pengelolaan hasil laut, SUCOFINDO memastikan bahwa setiap aspek dari sektor ini memenuhi regulasi yang berlaku dan menjaga keseimbangan ekosistem laut.

SUCOFINDO, with its expertise and experience, stands as a partner committed to ensuring that our maritime sector thrives with the highest standards of quality, sustainability, and safety. The sea is an asset that must be protected. SUCOFINDO offers a comprehensive suite of services designed to ensure that maritime operations are conducted efficiently, safely, and in compliance with international standards. From vessel inspections to marine product management, Sucofindo ensures that every aspect of this sector adheres to the prevailing regulations and maintains the balance of marine ecosystems.

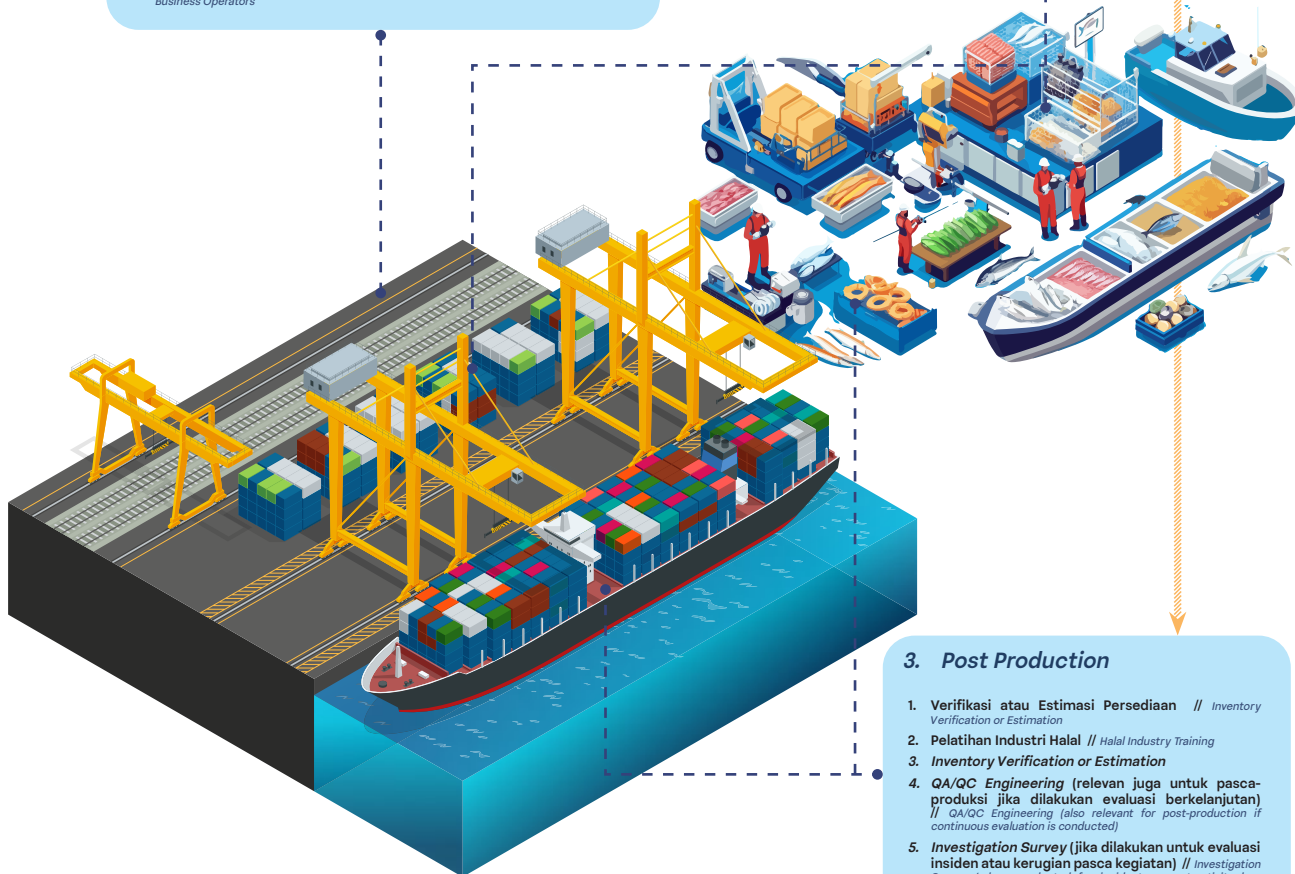


1. Pre-Production

1. **Audit Lingkungan Hidup** // Environmental Audit
2. **Monitoring Kualitas Limbah** // Waste Quality Monitoring
3. **Jasa AMDAL dan Dokumen Lingkungan Lainnya** // AMDAL Services and Other Environmental Documentation
4. **Sertifikasi Green Port** // Green Port Certification
5. **Sertifikasi Laik Operasi (SLO)** // Operational Worthiness Certification (SLO)
6. **Sertifikasi Sistem Manajemen ISO (14001, 22000, 45001, 50001, 9001)** // ISO Management System Certification (14001, 22000, 45001, 50001, 9001)
7. **Konsultansi Pelaksanaan GMP** // GMP Implementation Consultancy
8. **Sertifikasi Halal / Pelatihan Industri Halal** // Halal Certification / Halal Industry Training
9. **TKDN: Inspeksi, Verifikasi, Pelatihan** // TKDN: Inspection, Verification, Training
10. **Privat TKDN Berbayar Pelaku Usaha** // Paid Private TKDN Services for Business Operators
11. **ISO 14001 – Sistem Manajemen Lingkungan** // ISO 14001 – Environmental Management System
12. **ISO 22000 – Sistem Manajemen Keamanan Pangan** // ISO 22000 – Food Safety Management System
13. **ISO 45001 – Sistem Manajemen Kesehatan dan Keselamatan Kerja** // ISO 45001 – Occupational Health and Safety Management System
14. **ISO 50001 – Sistem Manajemen Energi** // ISO 50001 – Energy Management System
15. **ISO 9001 – Sistem Manajemen Mutu** // ISO 9001 – Quality Management System

2. Production

1. **Inspeksi Pra-Pengapalan** // Pre-Shipment Inspection
2. **Inspeksi Produk Industri** // Industrial Product Inspection
3. **Inspeksi Produk Konsumen** // Consumer Product Inspection
4. **Inspeksi Tempat Penyimpanan Barang** // Warehouse/Storage Facility Inspection
5. **ISPS Code**
6. **On/Off Hire Survey**
7. **Towing and Lashing Survey**
8. **Draught Survey**
9. **Container Inspection**
10. **Loss and Damage Cargo Survey**
11. **Marine Cargo Survey**
12. **Marine Survey** (Survei Batimetri, Survei Pasang Surut, *Morphometry Sea Base*) // Marine Survey (Bathymetric Survey, Tidal Survey, Sea Base Morphometry)
13. **Riksa Uji** (Verifikasi, Inspeksi, dan Pengujian Peralatan Non-NDT) // Riksa Uji (Verification, Inspection, and Testing of Non-NDT Equipment)
14. **Investigation Survey**
15. **QA/QC Engineering**
16. **Pemantauan Agunan atau Persediaan** // Collateral or Inventory Monitoring
17. **Manajemen Agunan atau Persediaan** // Collateral or Inventory Management



3. Post Production

1. **Verifikasi atau Estimasi Persediaan** // Inventory Verification or Estimation
2. **Pelatihan Industri Halal** // Halal Industry Training
3. **Inventory Verification or Estimation**
4. **QA/QC Engineering** (relevan juga untuk pasca-produksi jika dilakukan evaluasi berkelanjutan) // QA/QC Engineering (also relevant for post-production if continuous evaluation is conducted)
5. **Investigation Survey** (jika dilakukan untuk evaluasi insiden atau kerugian pasca kegiatan) // Investigation Survey (when conducted for incident or post-activity loss evaluation)

PERAN SUCOFINDO DI

SEKTOR PERTANIAN

SUCOFINDO ROLE IN AGRICULTURAL SECTOR

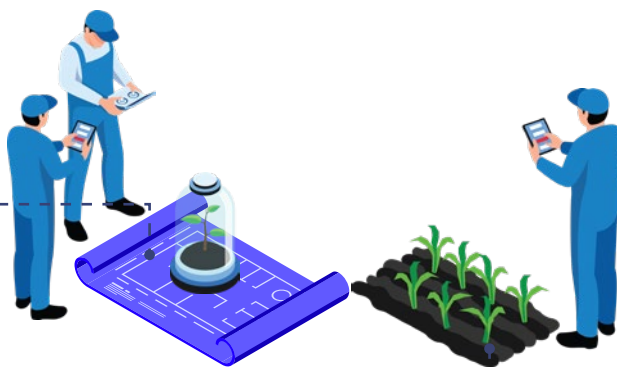
Kami menyediakan jasa-jasa terkait dengan upaya mitigasi risiko, pemenuhan persyaratan mutu, lingkungan dan K3, serta jasa-jasa lain yang terkait dengan industri pertanian, mulai dari tahap pra-investasi sampai dengan perdagangan domestik dan internasional.

We provides services related to risk mitigation, quality compliance, environmental and OSH, and other services related to the agricultural industry, ranging from pre-investment, construction, production to trade, both domestic and international.



1. Pra-Investasi

1. AMDAL, UKL-UPL, RKL-RPL, dan Kajian Lingkungan lainnya // AMDAL, UKL-UPL, RKL-RPL, and Other Environmental Studies
2. Penyusunan Studi Kelayakan Proyek Pertanian dan Penilaian Kinerja Usaha // Preparation of Agricultural Project Feasibility Studies and Business Performance Assessment
3. Perencanaan Air Bersih dan Limbah // Clean Water and Wastewater Planning
4. Kajian Perencanaan dan Pengelolaan Reduce-Reuse-Recycle-Recovery (Limbah B3 dan Non B3) // Study on Planning and Management of Reduce-Reuse-Recycle-Recovery (Hazardous and Non-Hazardous Waste)
5. Audit Sistem Manajemen Keselamatan Dan Kesehatan Kerja (SMK3) dan turunannya // Inventory Verification or Estimation



2. Pembukaan Lahan

1. Manajemen Proyek // Project Management
2. Kaji Ulang Rancangan (Design review) Verifikasi, Inspeksi, Pengujian, Pengawasan Konstruksi dan Audit Kelakuan // Design Review, Verification, Inspection, Testing, Construction Supervision, and Feasibility Audit
3. QA/QC Engineering

3. Plantation

1. Pengujian Kesuburan Tanah // Soil Fertility Testing



5. Pergudangan

1. Audit Kapabilitas dan Kapasitas Pabrik // Factory Capability and Capacity Audit
2. Manajemen & Pemantauan Agunan/Persediaan // Collateral/Inventory Management & Monitoring
3. Inspeksi dan Verifikasi Produk // Product Inspection and Verification
4. Verifikasi Kesesuaian Terhadap Persyaratan Tertentu Bidang Agribisnis // Compliance Verification with Specific Requirements in the Agribusiness Sector

4. Production

1. Sertifikasi Halal // Halal Certification
2. Sertifikasi GMP+ // GMP+ Certification
3. Penilaian Kinerja Usaha Pertanian // Agribusiness Performance Assessment
4. Verifikasi Kesesuaian Terhadap Persyaratan Tertentu Bidang Agribisnis // Compliance Verification with Specific Requirements in the Agribusiness Sector
5. Analisis dan Sertifikasi Kelayakan, Keamanan, Komposisi serta Kehalalan Pangan // Feasibility, Safety, Composition, and Halal Analysis and Certification for Food Products
6. Analisis Produk Pertanian, Minyak dan Lemak, Hortikultural dan Produk Olahannya // Analysis of Agricultural Products, Oils and Fats, Horticultural Products, and Their Derivatives
7. Verifikasi atau Pendampingan Teknis TKDN // Verification or Technical Assistance for TKDN (Domestic Component Level)

6. Shipping

1. Inspeksi Pra-Pengapalan (CISS/VPT/PCA/VOC/IVS) // Pre-Shipment Inspection (CISS / VPT / PCA / VOC / IVS)
2. Marine Cargo Survey
3. Fumigasi // Fumigation
4. Jasa-jasa Marine (Kemaritiman) : ISPS Code, On/Off Hire Survey, Towing & Lashing Survey, Draught Survey, Container Inspection, Loss & Damage Cargo Survey dan Investigation Survey
5. Survey Riset (Kepuasan Pelanggan, Survey Pasar, Produk, dan turunannya) // Research Surveys (Customer Satisfaction, Market Surveys, Product Surveys, and Their Derivatives)
6. Sertifikasi Green Port // Green Port Certification



PERAN SUCOFINDO DI

SEKTOR MANUFAKTUR

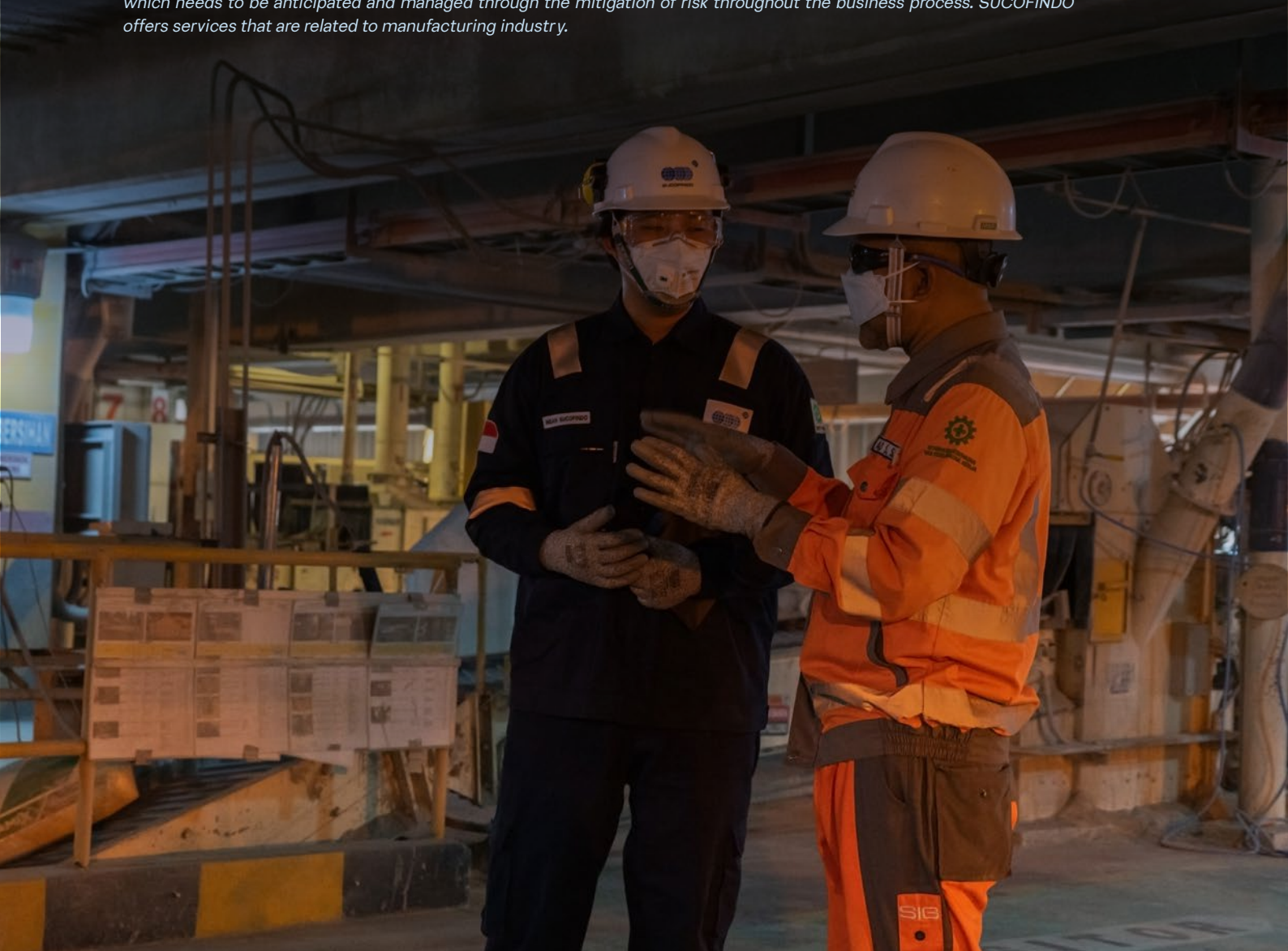
SUCOFINDO ROLE IN MANUFACTURE SECTOR

Kegiatan manufaktur memproses bahan baku menjadi barang atau produk jadi dengan melibatkan penggunaan tenaga kerja, mesin, peralatan dan bahan serta proses yang memberikan nilai tambah. Besarnya nilai tambah lazimnya berkorelasi dengan kelangkaan bahan baku, kerumitan proses, tingkat teknologi dan risiko yang ada. Keberterimaan produk di pasar perlu memperhatikan kebutuhan dan keinginan konsumen yang selalu berkembang.

Selain itu kegiatan manufaktur harus pula memenuhi peraturan perundangan yang terkait dengan perlindungan konsumen, lingkungan, dan aturan lainnya yang perlu diantisipasi dan dikelola melalui mitigasi risiko sepanjang proses bisnis. SUCOFINDO menyediakan jasa yang terkait dengan industri manufaktur.

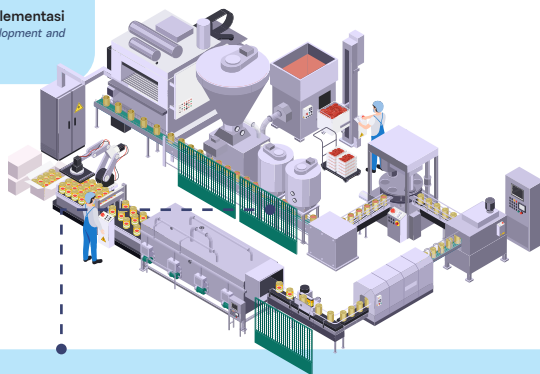
Manufacturing activities as processing of raw materials to become finished goods or products through the use of labor, machinery, equipment, materials and processes while adding value. The value added is typically correlated with the scarcity of raw materials, process complexity, level of technology and risks. Market acceptance must consider the needs and wants of consumers which are constantly evolving.

Besides, manufacturing activities had to comply with laws and regulations related to consumer protection, environment etc., which needs to be anticipated and managed through the mitigation of risk throughout the business process. SUCOFINDO offers services that are related to manufacturing industry.



1. Procurement

1. **Sustainability** (Keberlanjutan) Berbasis **Corporate Social Responsibility (CSR)** // Sustainability Based on Corporate Social Responsibility (CSR)
2. **Supervisi Investasi Proyek** // Project Investment Supervision
3. **Sertifikasi Standard Usaha (PPIU, LSUP, Pasar Rakyat)** // Business Standard Certification (PPIU, LSUP, Traditional Market Certification)
4. **Perencanaan Air Bersih dan Limbah (WWTP, WTP, Audit Air dan Kajian Teknis Instalasi Air bersih dan limbah)** // Clean Water and Wastewater Planning (WWTP, WTP, Water Audit, and Technical Assessment of Clean Water and Wastewater Installations)
5. **Analisis Mengenai Dampak Lingkungan (AMDAL), UKL-UPL, Environmental Social Impact Assessment/ ESIA, Environmental Baseline Analysis/ EBA, Environmental Risk Assessment/ ERA** // Environmental Impact Analysis (AMDAL), UKL-UPL, Environmental and Social Impact Assessment (ESIA), Environmental Baseline Analysis (EBA), Environmental Risk Assessment (ERA)
6. **Inspeksi/verifikasi TKDN Berbayar Negara** // State-Funded TKDN Inspection/Verification
7. **Inspeksi/verifikasi dan Pendampingan Teknis TKDN Berbayar Pelaku Usaha** // Business-Funded TKDN Inspection/Verification and Technical Assistance
8. **Konsultasi Terkait Pengembangan Implementasi Kebijakan TKDN** // Consultancy on the Development and Implementation of TKDN Policy



3. Production

1. **Inspeksi, Supervisi Bahan Tambang (termasuk Survei Verifikasi Teknis, Draught Survey Bahan Tambang)** // Inspection and Supervision of Mineral Resources (including Technical Verification Survey and Draft Survey of Mineral Materials)
2. **Inspeksi, Supervisi Mineral Processing dan Metalurgi** // Inspection and Supervision of Mineral Processing and Metallurgy
3. **Inspeksi dan Audit Komoditas Pangan dan Pertanian** // Inspection and Audit of Food and Agricultural Commodities
4. **Inspeksi dan Verifikasi Produk Kehutanan** // Inspection and Verification of Forestry Products
5. **Jasa GMP (Good Manufacturing Practices)** // GMP Services (Good Manufacturing Practices)
6. **Inspeksi Produk Konsumen** // Consumer Product Inspection
7. **Inspeksi Produk Industri** // Industrial Product Inspection
8. **Audit Kapabilitas dan Kapasitas Pabrik (INCO)** // Factory Capability and Capacity Audit (INCO)
9. **Layanan Pendukung Rantai Pasok** // Supply Chain Support Services
10. **General Pest Control**
11. **Hygiene Industry**
12. **Sertifikasi Laik Operasi (SLO) Pembangkit Listrik, Transmisi, Distribusi dan Pemanfaatan** // Operational Worthiness Certification (SLO) for Power Generation, Transmission, Distribution, and Utilization
13. **QA/QC Engineering**
14. **Verifikasi, Pengujian Otomotif & Sertifikasi Bengkel Otomotif** // Automotive Verification, Testing & Workshop Certification
15. **Jasa-Jasa Manajemen Proyek** // Project Management Services
16. **Sertifikasi Sistem Pangan (ISO 22000, HACCP, GMP, Organik)** // Food Safety System Certification (ISO 22000, HACCP, GMP, Organic)
17. **Sertifikasi Produk** // Product Certification
18. **Sertifikasi Sistem Keamanan Informasi (ISO 27001 dan turunannya, SMP)** // Information Security Management System Certification (ISO 27001 and its derivatives, SMP)

19. **Sertifikasi Sistem Manajemen Mutu (ISO 9001, ISO 21001)** // Quality Management System Certification (ISO 9001, ISO 21001)
20. **Sertifikasi Green Port** // Green Port Certification
21. **Kajian dan Audit Sistem Manajemen Pengamanan** // Security Management System Review and Audit
22. **Sertifikasi Sistem Manajemen (ISO 14001, ISO 50001, ISO 45001, ISO 28001, ISO 37000 Dll.)** // Management System Certification (ISO 14001, ISO 50001, ISO 45001, ISO 28001, ISO 37000, etc.)
23. **Sertifikasi Hijau (Bangunan dan Industri)** // Green Certification (for Buildings and Industries)
24. **Sertifikasi Green Building** // Green Building Certification
25. **Sertifikasi Sustainability (ISPO, SVLK dan turunannya)** // Sustainability Certification (ISPO, SVLK, and their derivatives)
26. **Sertifikasi Produk Halal** // Halal Product Certification
27. **Sertifikasi Sistem Manajemen Halal** // Halal Management System Certification
28. **Pelatihan Industri Halal** // Halal Industry Training
29. **Analisis, dan Sertifikasi Kelayakan, Keamanan, Komposisi serta Kehalalan Pangan termasuk Ikan dan Produk Olahannya** // Analysis and Certification of Feasibility, Safety, Composition, and Halal Compliance of Food Products, including Fish and Processed Products
30. **Analisis Produk Pertanian, Minyak dan Lemak, Hortikultural dan Produk Olahannya** // Analysis of Agricultural Products, Oils and Fats, Horticultural Products, and Their Derivatives
31. **Analisis dan Sertifikasi Kosmetik, Obat dan Obat Tradisional** // Analysis and Certification of Cosmetics, Medicines, and Traditional Medicines
32. **Analisis dan Sertifikasi Mainan, Tekstil, Kemasan, Keramik, Furniture, Karet, Plastik dan Produk Konsumen lainnya.** // Analysis and Certification of Toys, Textiles, Packaging, Ceramics, Furniture, Rubber, Plastics, and Other Consumer Products
33. **Sampling, Analisis dan Monitoring Kualitas Air Permukaan, Air Konsumsi, Air Limbah termasuk Air Laut.** // Sampling, Analysis, and Monitoring of Surface Water, Drinking Water, Wastewater, including Seawater
34. **Sampling, Analisis dan Monitoring Kualitas Udara Ambient, Indoor Air Quality, kebisingan dan Emisi serta Kajiannya.** // Sampling, Analysis, and Monitoring of Ambient Air Quality, Indoor Air Quality, Noise, and Emissions, including Related Assessments

2. In-Out Inventory

1. **Jasa Verifikasi Impor Barang Modal Dalam Keadaan Tidak Baru (BMTB)** // Verification Services for Imported Capital Goods in Used Condition (BMTB)
2. **Inspeksi Tempat Penyimpanan Barang** // Warehouse/Storage Facility Inspection
3. **Manajemen Agunan/Persediaan** // Collateral/Inventory Management
4. **Pemantauan Agunan / Persediaan** // Collateral/Inventory Monitoring
5. **Verifikasi / Estimasi Persediaan** // Inventory Verification/Estimation
6. **Jasa Verifikasi, Inspeksi dan Pengujian Peralatan (Non-NDT) dan Instalasi Industri Non Migas (Alat Angkat/Angkut, Bejana Tekan, Boiler, Katup Pengaman, Pompa dan Kompresor, Tangki Timbun, Penyalur Petir, Kelistrikan, Generator)** // Verification, Inspection, and Testing Services for Non-NDT Equipment and Non-Oil & Gas Industrial Installations (Lifting and Handling Equipment, Pressure Vessels, Boilers, Safety Valves, Pumps and Compressors, Storage Tanks, Lightning Protection Systems, Electrical Systems, Generators)
7. **Verifikasi, Inspeksi, Pengujian Instalasi Peralatan Pemadam Kebakaran dan Penanggulangan Tanggap Darurat Kebakaran** // Verification, Inspection, and Testing of Fire Protection Equipment Installations and Emergency Fire Response Systems
8. **Jasa Kaji Ulang Rancangan, Verifikasi, Inspeksi, dan Pengujian Fasilitas Industri Non-Migas** // Design Review, Verification, Inspection, and Testing Services for Non-Oil & Gas Industrial Facilities
9. **Kajian Perencanaan dan Pengelolaan Reduce-Reuse-Recycle-Recovery (Limbah B3 dan Non B3) dan Circular Economy** // Study on Planning and Management of Reduce-Reuse-Recycle-Recovery (Hazardous and Non-Hazardous Waste) and Circular Economy
10. **Inspeksi/verifikasi dan Pendampingan** // Inspection/Verification and Technical Assistance
11. **Teknis TKDN Berbayar Pelaku Usaha** // Business-Funded TKDN

PERAN SUCOFINDO DI

SEKTOR TRANSPORTASI & LOGISTIK

SUCOFINDO ROLE IN TRANSPORTATION & LOGISTIC SECTOR

Pada sektor transportasi dan logistik, SUCOFINDO mendukung kelancaran distribusi dan rantai pasok dengan menjamin kelayakan sarana transportasi, memverifikasi kargo, serta menyediakan layanan inspeksi prapengapalan dan kalibrasi alat logistik. Diperkuat dengan solusi pelacakan berbasis teknologi, SUCOFINDO turut meningkatkan transparansi dan akurasi pengiriman.

In the transportation and logistics sector, SUCOFINDO ensures smooth distribution and supply chain operations by certifying the feasibility of transport facilities, verifying cargo, and providing pre-shipment inspections and logistics equipment calibration. Strengthened by technology-based tracking solutions, SUCOFINDO enhances transparency and delivery accuracy.



1. Warehousing

1. **General Pest Control, Fumigasi, & Hygiene Industry** // General Pest Control, Fumigation, & Industrial Hygiene
2. **Inspeksi Tempat Penyimpanan Barang** // Storage Facility Inspection
3. **Sertifikasi Laik Operasi (SLO) Pembangkit Listrik, Transmisi, Distribusi dan Pemanfaatan** // Operation Worthiness Certification (SLO) for Power Plants, Transmission, Distribution, and Utilization
4. **Verifikasi, Inspeksi, Pengujian Instalasi Peralatan pemadam Kebakaran dan Penanggulangan Tanggap Darurat Kebakaran** // Verification, Inspection, and Testing of Fire Protection Equipment and Emergency Fire Response Systems
5. **QA/QC Engineering**
6. **Supervisi Investasi Proyek** // Project Investment Supervision
7. **Sertifikasi Sistem Manajemen Mutu (ISO 9001)** // Quality Management System Certification (ISO 9001)
8. **Sistem Manajemen (ISO 14001 - Sistem Manajemen Lingkungan; ISO 50001 - Sistem Manajemen Energi; ISO 45001 - SMK3; ISO 28001 - Sistem Manajemen Keamanan Rantai Pasokan; ISO 37000 - Sistem Manajemen Anti Penyuapan; dll)** // Management Systems (ISO 14001 - Environmental Management System; ISO 50001 - Energy Management System; ISO 45001 - Occupational Health and Safety Management System; ISO 28001 - Supply Chain Security Management System; ISO 37000 - Anti-Bribery Management System; etc.)
9. **Validasi dan Verifikasi Gas Rumah Kaca** // Greenhouse Gas Validation and Verification
10. **Perencanaan Air Bersih dan Limbah** // Clean Water and Wastewater Planning
11. **Kajian Perencanaan dan Pengelolaan Reduce-Reuse-Recycle-Recovery (Limbah B3 dan Non B3)** // Planning and Management Studies for Reduce-Reuse-Recycle-Recovery (Hazardous and Non-Hazardous Waste)
12. **AMDAL, UKL-UPL, RKL-RPL, dan Kajian Lingkungan lainnya** // Environmental Impact Assessment (AMDAL), Environmental Management and Monitoring Plans (UKL-UPL, RKL-RPL), and Other Environmental Studies
13. **Audit Sistem Manajemen Keselamatan Dan Kesehatan Kerja (SMK3)** // Occupational Health and Safety Management System (SMK3) Audit
14. **Sertifikasi Hijau (Green Building, Green Industry)** // Occupational Health and Safety Management System (SMK3) Audit
15. **Pengujian Kualitas Udara, Air, Kebisingan, Limbah, Mikrobiologi, dsbnya** // Air, Water, Noise, Waste, and Microbiological Quality Testing, etc.
16. **Verifikasi atau Pendampingan Teknis TKDN** // Technical Verification or Assistance for Domestic Component Level (TKDN)
17. **Pusat Logistik Berikat** // Bonded Logistics Center (PLB)



2. Packaging

1. **General Pest Control, Fumigasi, & Hygiene Industry** // General Pest Control, Fumigation, & Industrial Hygiene
2. **Pengujian Kualitas Udara, Air, Kebisingan, Limbah, Mikrobiologi, dsbnya** // Air, Water, Noise, Waste, and Microbiological Quality Testing, etc.
3. **Pengujian peralatan listrik dan non-listrik** // Testing of Electrical and Non-Electrical Equipment
4. **Kalibrasi Peralatan Dimensi, Massa, Tekanan, Listrik, Gaya, Temperatur, volume dan Instrumentasi.** // Calibration of Dimensional, Mass, Pressure, Electrical, Force, Temperature, Volume, and Instrumentation Equipment

3. Shipping

1. **Inspeksi Pra-Pengapalan (CISS/VPTI/PCA/VOC/IVS)** // Pre-Shipments Inspection (CISS/VPTI/PCA/VOC/IVS)
2. **Marine Cargo Survey**
3. **Fumigasi** // Fumigation
4. **Jasa-jasa Marine (Kemaritiman) : ISPS Code, On/Off Hire Survey, Towing & Lashing Survey, Draught Survey, Container Inspection, Loss & Damage Cargo Survey dan Investigation Survey**
5. **Survey Riset (Kepuasan Pelanggan, Survey Pasar, Produk, dan turunannya)** // Research Surveys (Customer Satisfaction, Market Surveys, Product Surveys, and Their Derivatives)
6. **Sertifikasi Green Port** // Green Port Certification



PERAN SUCOFINDO DI

SEKTOR PEMERINTAHAN

SUCOFINDO ROLE IN GOVERNMENT SECTOR

Pemerintah wajib memberikan kesejahteraan dan perlindungan kepada setiap warga-negaranya, diantaranya melalui pelayanan administrasi yang efisien, penciptaan kesempatan kerja, perlindungan konsumen dan penyediaan lingkungan hidup yang layak, otomasi pelayanan, peningkatan iklim investasi, perlindungan konsumen serta pemeliharaan dan perlindungan lingkungan hidup.

Tugas Pemerintah terdiri dari tahapan tahapan perumusan kebijakan, monitoring pelaksanaannya dan evaluasi atas hasil serta tindak lanjut yang diperlukan. Jasa SUCOFINDO memfasilitasi pemerintah dalam menjalankan tahapan-tahapan yang dimaksud

Government is obliged to provide its people with welfare and protection, such as by efficient administrative services, job creation and consumer protection, as well as the rights for quality environment, service automation, improvement of investment climate, consumer protection as well as the good quality environment,

Government tasks involve the following stages the formulation of policy, implementation monitoring and evaluation of results and the necessary follow-up. SUCOFINDO services facilitates the government in implementing those stages



1. Pre-Investment

1. AMDAL, UKL-UPL, RKL-RPL, dan Kajian Lingkungan lainnya // *Environmental Impact Assessment (AMDAL), UKL-UPL, RKL-RPL, and Other Environmental Studies*
2. Kaji Ulang Rancangan (*Design Review*), Verifikasi, Inspeksi, Pengujian, Pengawasan Konstruksi, dan Audit Kelayakan Infrastruktur // *Design Review, Verification, Inspection, Testing, Construction Supervision, and Infrastructure Feasibility Audit*
3. ISO 14001 – Sistem Manajemen Lingkungan // *ISO 14001 – Environmental Management System*
4. Asset Management System – ISO 55001 // *Asset Management System – ISO 55001*
5. Perencanaan dan Rekayasa Instalasi Air Bersih dan Limbah // *Clean Water and Wastewater Infrastructure Planning and Design*
6. Pengujian Sampel dan Analisis Limbah Padat, B3, Tanah Terkontaminasi, serta Kajian // *Sampling and Analysis of Solid Waste, Hazardous Waste (B3), Contaminated Soil, and Related Assessments*
7. Validasi dan Verifikasi Gas Rumah Kaca / Pernyataan Lingkungan (ESG, Green Bond, LCA, dll) // *Validation and Verification of Greenhouse Gas Emissions / Environmental Declarations (ESG, Green Bond, LCA, etc.)*
8. Konsultasi terkait Energi Baru dan Terbarukan // *Consultancy in New and Renewable Energy*

2. Program Planning & Development

1. Konsultasi, Perencanaan, Pelaksanaan, Pemantauan, dan Evaluasi di Sektor Pemerintahan Terkait Investasi // *Consulting, Planning, Implementation, Monitoring, and Evaluation in Government Sector Investments*
2. Konsultasi Pengembangan dan Pembangunan Telematika Terpadu di Sektor Pemerintah // *Development and Implementation of Integrated Telematics in Government Sector*
3. Bimbingan Teknis Perencanaan, Pelaksanaan, dan Evaluasi Program Layanan Publik // *Technical Assistance for Public Service Program Planning and Implementation*
4. Fasilitas Bimbingan dan Pendampingan Teknis Program Layanan Publik // *Technical Guidance and Support for Public Service Development Programs*
5. Konsultasi terhadap Keandalan dan Keamanan Instalasi Industri // *Consulting on Reliability and Safety of Industrial Installations*
6. Riksa Uji Peralatan (Non-NDT) dan Instalasi Industri Non-MIGAS // *Equipment Evaluation (Non-NDT) and Non-Oil & Gas Industry Installations*



4. Monitoring & Certification

1. ISO 9001 – Sistem Manajemen Mutu // *ISO 9001 – Quality Management System*
2. Audit Sistem Manajemen Keselamatan dan Kesehatan Kerja (SMK3) // *Occupational Health and Safety Management System (SMK3) Audits*
3. Audit Sistem Manajemen Pengamanan // *Security Management System Audits*
4. Sertifikasi Green Port / Green Building
5. Sertifikasi Sistem Manajemen (ISO 45001, ISO 50001, ISO 28001, ISO 37000, dll) // *Management System Certifications (ISO 45001, ISO 50001, ISO 28001, ISO 37000, etc.)*
6. Konsultasi dan Kajian Sumber Daya Alam // *Consulting and Studies on Natural Resources*
7. Jasa AMDAL dan Dokumen Lingkungan lainnya // *Environmental Documents and AMDAL Services*
8. Sertifikasi Sistem Manajemen Mutu dan Lingkungan // *Quality and Environmental Management System Certifications*
9. Verifikasi Impor Barang Modal dalam Keadaan Tidak Baru // *Verification of Used Capital Goods Imports*

3. Implementation & Operations

1. Fasilitas Pengelolaan Sampah dan Limbah Kota // *Municipal Waste Management and Treatment Facilities*
2. Pengendalian Hama / General Pest Control & Hygiene Industry // *Pest Control, Fumigation & Industrial Hygiene Services*
3. Inspeksi Tempat Penyimpanan Barang // *Storage Facility Inspections*
4. Sertifikasi Laik Operasi (SLO) // *Operational Feasibility Certification (SLO)*
5. Pengujian Sampel, Analisis, dan Pemantauan Kualitas Air dan Udara // *Sampling, Testing, and Monitoring of Water and Air Quality*
6. Kalibrasi Alat Kesehatan dan Kalibrasi Peralatan Industri // *Medical Equipment Calibration and Industrial Instrument Calibration*
7. Sistem Informasi Geografis // *Geographic Information Systems (GIS)*
8. Survey Terestris (GPS, Topografi, dan Kadastral) // *Terrestrial Surveys (GPS, Topographic, and Cadastral)*
9. Survey Aerial (UAV, LiDAR, dan Satellite Imagery) // *Aerial Surveys (UAV, LiDAR, and Satellite Imagery)*

PERAN SUCOFINDO DI

SEKTOR FINANSIAL

SUCOFINDO ROLE IN FINANCE SECTOR

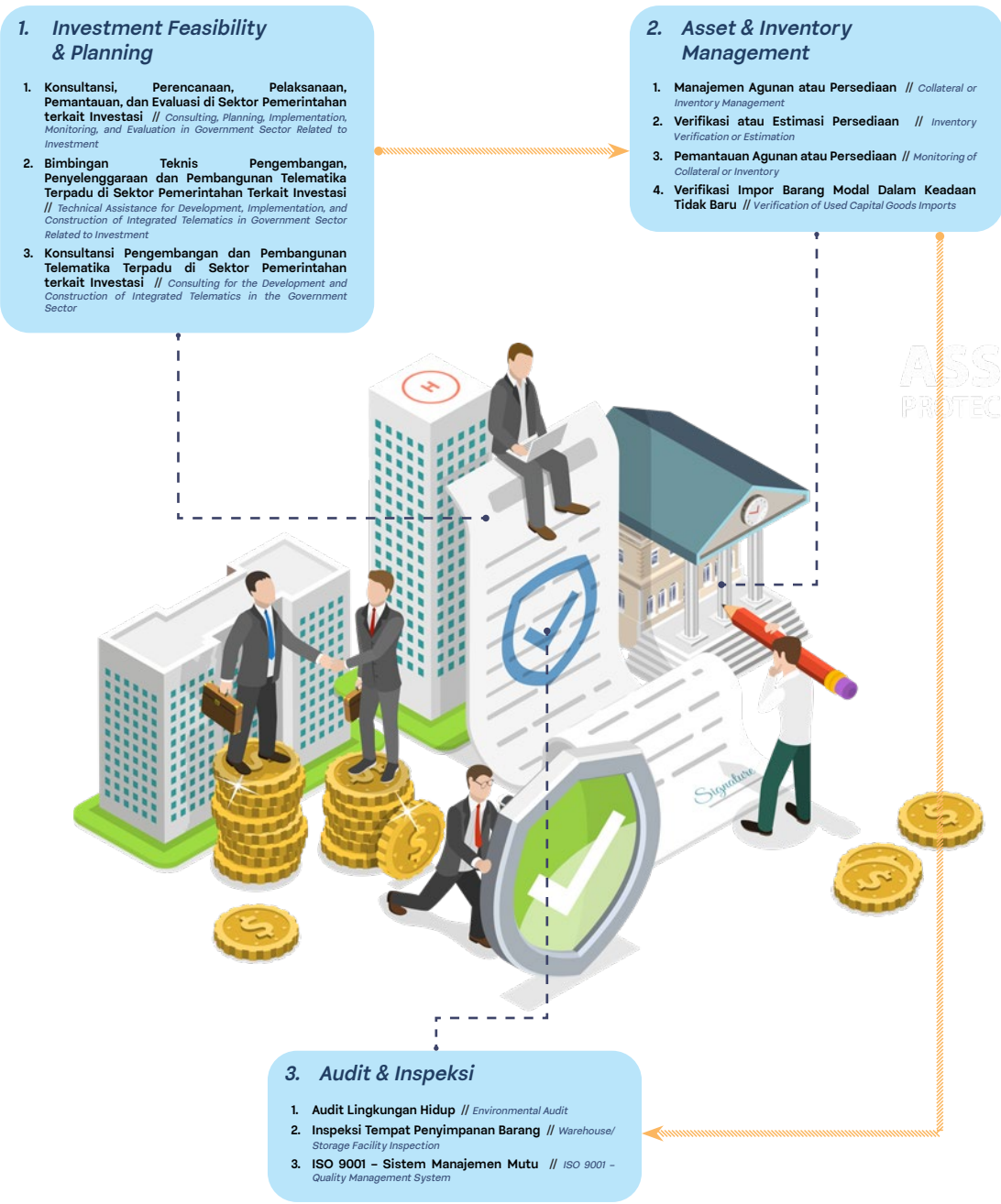
Layanan kami mencakup verifikasi aset dan agunan, penilaian kelayakan proyek (*due diligence*), audit kepatuhan terhadap regulasi, pengujian dokumen transaksi, serta konsultasi manajemen risiko. Selain itu, SUCOFINDO juga mendukung penyusunan laporan keberlanjutan (*Assurance Sustainability Report*) bagi institusi keuangan yang ingin meningkatkan transparansi dan tanggung jawab sosial.

Dengan pengalaman lebih dari enam dekade, tenaga profesional bersertifikasi, serta teknologi seperti SAMS (*Smart Asset Management System*), SUCOFINDO memastikan bahwa sektor finansial dapat beroperasi dengan lebih efisien, transparan, dan terpercaya.

Our services include asset and collateral verification, project feasibility assessments (due diligence), regulatory compliance audits, transaction document verification, and risk management consultancy. Additionally, SUCOFINDO supports financial institutions in preparing Assurance Sustainability Reports to enhance transparency and social responsibility.

With over six decades of experience, certified professionals, and advanced technologies such as SAMS (Smart Asset Management System), SUCOFINDO ensures the financial sector operates with greater efficiency, transparency, and reliability.





ASS
PROTEC



HALAL INDONESIA

PERAN SUCOFINDO DI

INDUSTRI HALAL

SUCOFINDO ROLE IN HALAL INDUSTRY

Kebutuhan akan kepastian dalam Industri Halal semakin meningkat baik secara Nasional maupun Internasional. Berbagai pihak yang terkait antara lain produsen, UMKM, pedagang, eksportir, importir serta pihak-pihak lain yang membutuhkan.

The need for assurance in the Halal Industry is increasing both Nationally and Internationally. Many parties have begun to pay more attention to the halal industry, such as Small Micro Medium Enterprise (SMME's), traders, exporters, importers and other parties.

Sertifikasi Produk Halal adalah serangkaian kegiatan untuk mendapatkan bukti pengakuan kehalalan suatu produk berupa Sertifikat Halal dari Badan Penyelenggara Jaminan Produk Halal (BPJPH), berdasarkan fatwa halal tertulis yang dikeluarkan oleh Majelis Ulama Indonesia (MUI) atas hasil laporan pemeriksaan dan/atau pengujian terhadap kehalalan produk yang dilakukan oleh Lembaga Pemeriksa Halal (LPH).

Halal Product Certification is a series of activities to obtain proof of acknowledgment of the halalness of a product in the form of Halal Certificate from the Halal Product Assurance Organising Body (BPJPH), based on the halal fatwa issued by the Indonesian Council of Ulema (MUI) as the results of halal assessment & audit conducted by the Halal Audit Agency (LPH).

LPH SUCOFINDO telah mengembangkan jasa-jasa di sektor industri halal, yaitu:

- Sertifikasi Produk Halal
- Sertifikasi Sistem Manajemen Halal
- Pelatihan Industri Halal

SUCOFINDO Halal Audit Agency has developed innovations related to Halal services such as:

- *Halal Product Certification*
- *Halal Management System Certification*
- *Halal Industry Training*

SUCOFINDO TECHNOLOGY

SUCOFINDO ROLE IN TECHNOLOGY INDUSTRY

Peran teknologi dan informasi semakin sulit untuk dipisahkan dari perkembangan bisnis. Organisasi dan perusahaan pun saat ini tengah berlomba-lomba dalam mengembangkan dan mengadopsi teknologi terbaru.

SUCOFINDO TECHNOLOGY menyediakan layanan teknologi informasi dan komunikasi (TIK) untuk mendukung efektifitas dan efisiensi proses bisnis serta keamanan informasi pelanggannya.

Ruang lingkup jasa yang ditawarkan ialah:

It's becoming increasingly difficult to separate the roles of technology and information from business development. Organizations and companies are currently competing in developing and adopting the latest technology SUCOFINDO TECHNOLOGY provides information and communication technology (ICT) services to support the effectiveness and efficiency of business processes and information security of its customers.

Our scope of services:



Jasa Internet of Things (IoT) dan Artificial Intelligence (AI)

SUCOFINDO menghadirkan layanan berbasis *Internet of Things* (IoT) dan *Artificial Intelligence* (AI) guna mendukung kebutuhan industri di era digital. IoT memungkinkan perangkat saling terhubung dan terintegrasi melalui sensor dan sistem terpusat untuk monitoring dan otomatisasi real-time, sementara AI memungkinkan sistem melakukan analisis data, pengambilan keputusan, serta memberikan rekomendasi cerdas layaknya manusia. Layanan ini telah diterapkan dalam berbagai program seperti SPARING, CEMS, dan SPAS, yang mendukung pemantauan kualitas lingkungan dan efisiensi operasional berbasis data.

Internet of Things (IoT) and Artificial Intelligence (AI) Service

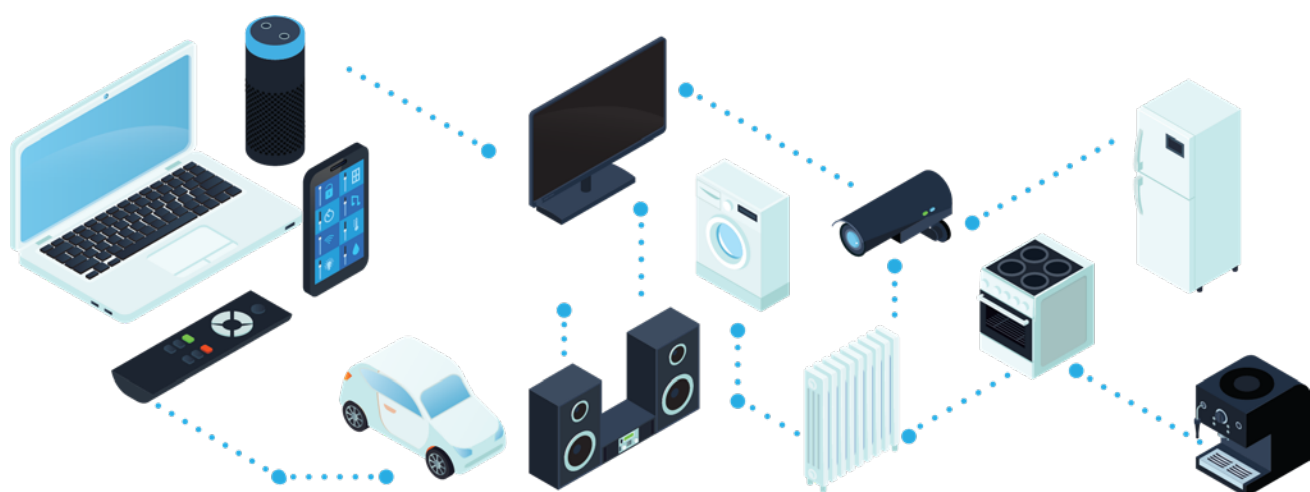
SUCOFINDO offers *Internet of Things* (IoT) and *Artificial Intelligence* (AI) services to support industrial needs in the digital era. IoT enables interconnected devices equipped with sensors to operate under a centralized system for real-time monitoring and automation, while AI allows systems to analyze data, make decisions, and provide intelligent recommendations similar to human capabilities. These services have been applied in various programs such as SPARING, CEMS, and SPAS, supporting environmental monitoring and data-driven operational efficiency.

Jasa Solusi Bisnis (Enterprise Solution)

Layanan Solusi Bisnis SUCOFINDO mencakup konsultasi strategi IT, pengembangan sistem seperti ERP dan CRM, serta implementasi dan integrasi teknologi yang disesuaikan dengan kebutuhan spesifik perusahaan. Solusi ini bertujuan meningkatkan efisiensi, daya saing, serta mendukung otomatisasi proses bisnis. Selain itu, SUCOFINDO juga menyediakan layanan keamanan siber berbasis pendekatan *People, Process, and Technology* untuk menciptakan sistem keamanan yang tangguh dan berkelanjutan, termasuk dalam upaya mendukung pemerintah menghadapi ancaman siber nasional.

Enterprise Solution Services

SUCOFINDO's *Enterprise Solution* services include IT strategy consulting, system development such as ERP and CRM, as well as customized technology implementation and integration tailored to each company's specific needs. These solutions aim to enhance efficiency, competitiveness, and automate business processes. Additionally, Sucofindo provides cybersecurity services using the integrated approach of *People, Process, and Technology* to build a sustainable and robust security system, while also supporting the government in addressing national cyber threats.



AVIATION SOLUTIONS

SUCOFINDO menawarkan layanan teknologi informasi dan komunikasi bagi industri aviasi dalam membantu untuk mengelola seluruh Operasi Penerbangan yang meliputi: *Aeronautical Message Handling System (AMHS), Voice Switching, Arrival & Departure Manager, Flight Information Display System, Flight Integrated System, Ground to Air Communication, Flight Management System Data (ARINC 424 Format), dan ATC Rostering.*

AVIATION SOLUTIONS

SUCOFINDO offers information and communication technology services for the aviation industry to help and manage all aviation operations, which include Aeronautical Message Handling System (AMHS), Voice Switching, Arrival & Departure Manager, Flight Information Display System, Flight Integrated System, Ground to Air Communication, Flight Management System Data (ARINC 424 Format), and ATC Rostering.

IOT SOLUTIONS

SUCOFINDO mengembangkan program logic control untuk pengambilan data secara terus menerus dan dalam jaringan serta aplikasi yang dapat dikembangkan sesuai kebutuhan spesifik perusahaan diantaranya adalah: *Vessel Fuel Consumption Monitoring, Tank Volume Monitoring dan Waste Water Monitoring.*

IOT SOLUTIONS

SUCOFINDO has developed a logic control program for continuous and networked data retrieval as well as applications that can be developed according to the company's specific needs, including Vessel Fuel Consumption Monitoring, Tank Volume Monitoring and Waste.

IT CONSULTANCY & TRAINING

SUCOFINDO menawarkan jasa konsultasi dan pelatihan dengan melakukan analisa bisnis secara menyeluruh dalam memahami dan memastikan teknologi dan informasi perusahaan tetap selaras dengan bisnis perusahaan.

IT CONSULTANCY & TRAINING

SUCOFINDO offers consulting and training services by conducting a thorough business analysis in understanding and ensuring that the company's technology and information remain aligned with the company's business.



Akreditasi

Accreditation

- Lembaga Ekolabel Indonesia
- *Federations of Oils, Seeds and Fats Association (FOSFA) UK*
- *International Laboratory Accreditation Commission (ILAC)*
- *United State "Consumer Product Safety Commission" (US-CPSC)*
- Komite Akreditasi Nasional (KAN)
- IECCE (*International Electrotechnical Commission for Electrical Equipment*)
- SNI ISO/IEC 17020 : 2012
- SNI ISO/IEC 17025 : 2017
- SNI ISO/IEC 17065 : 2012

Sertifikasi

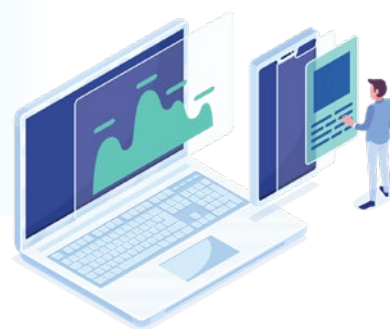
Accreditation

- SNI ISO 9001:2015 Sistem Manajemen Mutu
- SNI ISO 31000:2018 Sistem Manajemen Risiko
- SNI ISO 22301:2016 Sistem Manajemen Kelangsungan Bisnis
- SNI ISO 14001:2015 Sistem Manajemen Lingkungan
- SNI ISO 37001:2016 Sistem Manajemen Anti Penyuapan
- SNI ISO 27001:2013 Sistem Manajemen Keamanan Informasi
- SNI ISO 45001:2018 Sistem Manajemen K3
- SMK3 PP NO. 50 TAHUN 2012
- BARANTAN - Kementerian Pertanian
- SMK3 Minerba - Kementerian ESDM

Keanggotaan Asosiasi

Association Membership

- *TIC Council (d/h IFIA)*
- Asosiasi Independen Surveyor Indonesia (AISI)
- *Grains and Feed Trade Association (GAFTA), Inggris*
- *Sugar Association of London, Inggris*
- *ASEAN Vegetable Oil Club (AVOC), Malaysia*
- *International Federation of Organic Agriculture Movements (IFOAM), Germany*
- *National Institute of Oil Seed Product (NIOP), USA*
- Asosiasi Tally Independen Indonesia
- *Liverpool Cotton Association (LCA) Inggris*
- Asosiasi Perusahaan Pengendali Hama Indonesia (ASPPHAMI)
- Asosiasi Perusahaan Inspeksi Teknis Indonesia (APITINDO)
- *American Society for Nondestructive Testing (ASNT), USA*
- Asosiasi Pertambangan Indonesia (IMA)
- Asosiasi Jasa Pertambangan Umum Indonesia (ASPINDO)
- Asosiasi Migas Indonesia (IPA)
- Asosiasi Lembaga Sertifikasi Indonesia (ALSI)
- Ikatan Nasional Konsultan Indonesia (INKINDO)





Pelanggan Kami

Our Clients

- ADARO INDONESIA
- ADIMITRA BARATAMA NUSANTARA
- ADITYAA ENERGY RESOURCE PTE LTD
- AGRO INDUSTRI NASIONAL
- AKR CORPORINDO, TBK
- ALHASANIE
- AMMAN MINERAL INDUSTRI
- AMMAN MINERAL NUSA TENGGARA
- ANG AND FANG BROTHOR
- ANTAM (PERSERO)
- ANTANG GUNUNG MERATUS
- ANUGERAH MINERAL SEMESTA
- APG WESTKAMPAR INDONESIA
- ARKARA PRATHAMA ENERGI
- ARUTMIN INDONESIA
- ASMIN BARA BRONANG
- BADAK NGL
- BADAN KEPEGAWAIAN NEGARA (BKN)
- BADAN PENVELENGGARA JAMINAN PRODUK HALAL
- BANK SYARIAH INDONESIA TBK
- BARA TABANG
- BAREMAGA CITRA MULIA PERSADA
- BARAMULTI SUKSES SARANA
- BATUBARA GLOBAL ENERGY
- BAYAN RESOURCES TBK
- BENDAHARA PENGELUARAN SATKER BADAN PANGAN NASIONAL
- BERAU COAL
- BHARINTO EKATAMA
- BHIMASENA POWER INDONESIA
- BHUMI RANTAU ENERGI
- BORNEO ALUMINA INDONESIA
- BORNEO INDOBARA
- BOSOWA ENERGI
- BP. BERAU LTD
- BDPD KELAPA SAWIT
- BUKIT ASAM TBK
- BUMI SIAK PUSAKO
- BUT ENI EAST SEPINGGAN LIMITED
- BUT PETROGAS (BASIN) LTD
- CENTRAL CIPTA MURDAYA
- CERIA NUGRAHA INDOTAMA
- CHANDRA ASRI PETROCHEMICAL TBK
- CHINA ALUMINUM INTERNATIONAL ENGINEERING CORPORATION LIMITED
- CHIYODA INTERNATIONAL INDONESIA
- CSTS JOINT OPERATION
- DARMA HENWA TBK
- DINAS PENANAMAN MODAL DAN PELAYANAN TERPADU SATU PINTU
- DIRJEN ENERGI BARU TERBARUKAN DAN KONSERVASI ENERGI
- DITJEN INDUSTRI KIMIA FARMASI DAN TEKSTIL KEMENPERIN
- DIZAMATRA POWERINDO
- DSSP POWER SUMSEL
- ENERGI BATUBARA LESTARI
- ERASAKTI WIRAFORESTAMA
- FAJAR ANUGERAH DINAMIKA
- FAJAR SAKTI PRIMA
- FREEPORT INDONESIA
- GAG NIKEL
- GANDA ALAM MAKMUR
- GANS ENERGI INDONESIA
- GAYO MINERAL RESOURCES
- GCL INDO TENAGA
- GENERAL ENERGY BALI
- GEO DIPA ENERGI (PERSERO)
- GHANI RAYA MANDIRI
- GLOBAL ENERGI LESTARI
- GLOBAL STANDARD TESTING TECHNOLOGY SERVICE CO LTD
- GRID SOLUTIONS INDONESIA
- GUANGZHOU TOPMARK TESTING CONSULTING SERVICE CO LTD
- GUNUNG BARA UTAMA
- HALMAHERA INTERNATIONAL RESOURCES
- HALMAHERA JAYA FERONIKEL
- HALMAHERA PERSADA LYGEND
- HASNUR JAYA TAMBANG
- HENGJAYA MINERALINDO
- HOFFMEN INTERNATIONAL
- HUMPUSS
- INDAH KIAT PULP & PAPER TBK
- INDEXIM COALINDO
- INDOMINCO MANDIRI
- INDONESIA ASAHAN ALUMINIUM
- INDONESIA CHEMICAL ALUMINA
- INDONESIA MOROWALI INDUSTRIAL PARK
- INSANI BARA PERKASA
- INTI KARYA PERSADA TEHNIK
- JAWA SATU POWER
- JEMBAYAN MUARABARA
- JHONLIN GROUP
- KALIMANTAN ALUMINIUM INDUSTRY
- KALTIM PRIMA COAL
- KANTOR DEPUTI BIDANG PENGENDALIAN PELAKSANAAN PENANAMAN MODAL BKPM
- KANTOR PUSAT BADAN KEBIJAKAN PEMBANGUNAN KESEHATAN BADAN PENELITIAN DAN PENGEMBANGAN KESEHATAN KEMEN
- KEJORA PRATAMA MINERAL
- KEMENPERIN (DITJEN INDUSTRI AGRO)
- KEMENTERIAN ESDM (DITJEN MINERBA)
- KERETA API INDONESIA (PERSERO)
- KIDECO JAYA AGUNG
- KILANG PERTAMINA INTERNASIONAL
- KOBEXINDO CEMENT
- KSO BKI - SUCOFINDO - SI
- KSO SUCOFINDO - SURVEYOR INDONESIA
- LAMINDO INTER MULTIKON
- LANNA HARITA INDONESIA
- LASKAR SEMESTA ALAM
- MAHAKAM SUMBER JAYA
- MANDIRI INTI PERKASA
- MARINA BARA LESTARI
- MARUNDA GRAHA MINERAL
- MC DERMOTT INDONESIA
- MEARES SOPUTAN MINING
- MEDCO E & P GRISSIK LTD
- MEDCO E & P INDONESIA
- MEDCO E & P RIMAU
- MEDCO E & P TARAKAN
- MEDCO E&P NATUNA LTD
- MEGA GLOBAL ENERGY
- METALIK BARA SINERGI
- MINERAL MAJU SEJAHTERA
- MITRA KARAWANGJAYA
- MITRA SUKSES GLOBALINDO
- MULTI HARAPAN UTAMA
- MUSTIKA INDAH PERMAI
- NUNUKAN BARA SENTOSA SATU
- NUSA HALMAHERA MINERALS
- PAITON ENERGY
- PAMA PERSADA NUSANTARA
- PANYE (HK) TECHNOLOGY CO LTD
- PAPANDAYAN COCOA INDUSTRIES
- PELABUHAN INDONESIA (PERSERO)
- PELAYARAN BAHTERA ADHIGUNA (PERSERO)
- PELAYARAN NASIONAL INDONESIA (PELNI)
- PELINDO TERMINAL PETIKEMAS
- PELSART TAMBANG KENCANA
- PEMBANGUNAN ACEH (PERSERODA)
- PEMBANGUNAN PERUMAHAN (PERSERO)
- PENTA DHARMA KARSA
- PENTA OCEAN-TOYO-RINKAI-PP-WIKA-JAKON-CONSORTIUM PERKASA INAKAKERTA
- PERKEBUNAN NUSANTARA IV
- PERMATA INTERNATIONAL PTE. LTD.
- PERTAMINA (PERSERO)
- PERTAMINA DRILLING SERVICES INDONESIA
- PERTAMINA EP
- PERTAMINA EP CEPU
- PERTAMINA GAS (PERTAGAS)
- PERTAMINA GEOTHERMAL ENERGY
- PERTAMINA HULU ENERGI JAMBI MERANG
- PERTAMINA HULU ENERGI OFFSHORE NORTH WEST JAVA
- PERTAMINA HULU KALIMANTAN TIMUR
- PERTAMINA HULU MAHAKAM
- PERTAMINA HULU ROKAN
- PERTAMINA HULU SANGA SANGA
- PERTAMINA PATRA NIAGA
- PERTAMINA TRAINING & CONSULTING
- PERTAMINA TRANS KONTINENTAL
- PERUM BULOG
- PERUSAHAAN LISTRIK NEGARA (PERSERO)
- PLN BATUBARA NIAGA
- PLN ENERGI PRIMER INDONESIA
- PLN INDONESIA POWER
- PLN NUSANTARA POWER
- PLN NUSANTARA POWER SERVICES
- POS INDONESIA (PERSERO)
- POSITION
- PRIAMANAYA ENERGI
- PRIMA DHARMA KARSA
- PRIMA MULTI MINERAL
- PUPUK ISKANDAR MUDA
- PUPUK KALIMANTAN TIMUR TBK
- PUPUK KUJANG
- PUSAT PENINGKATAN PENGGUNAAN PRODUK DALAM NEGERI SETJEN KEMENPERIN
- QUALITY SUKSES SEJAHTERA
- RDMP BALIKPAPAN JO
- SEBUKU SEJAKA COAL
- SELAGO MAKMUR PLANTATION
- SEMEN INDONESIA (PERSERO)
- SEMEN PADANG
- SEMEN TONASA
- SEMESTA CENTRAMAS
- SGS INDONESIA
- SINAR MAS AGRO RESOURCES AND TECHNOLOGY TBK (SMART TBK)
- SINGLURUS PRATAMA
- SMELTING
- SOCFIN INDONESIA
- SOLUSI BANGUN INDONESIA TBK
- SORIK MARAPI GEOTHERMAL POWER
- SUMBER PANCA ENERGI
- SUMBER SEGARA PRIMADAYA
- SUMBER SURYADAYA PRIMA
- SUPRA BARA ENERGI
- SUPRABARI MAPANINDO MINERAL
- TASPEN (PERSERO)
- TEKINDO ENERGI
- TENAGA LISTRIK BENGKULU
- TGS GEOPHYSICAL INDONESIA
- TIMAH TBK
- TIWA ABADI
- TRIMEGAH BANGUN PERSADA TBK
- UMBARA SAKTI DANISWARA
- UNITED TRACTORS TBK
- URAWA REKAYASA MANDIRI
- USAHAKITA KINERJATAMA
- VALE INDONESIA TBK
- VIRTUE DRAGON NIKEL INDUSTRIAL PARK
- WAHANA BARATAMA MINING
- WELL HARVEST WINNING ALUMINA REFINERY

TITIK LAYANAN & LABORATORIUM

Service Point & Laboratory

Head Office GRAHA SUCOFINDO

Jl. KH. Guru Amin No.Kav. 34, RT.4/RW.1,
Kel. Pancoran, Kec. Pancoran,
Kota Jakarta Selatan,
Daerah Khusus Ibukota Jakarta 12780
Phone: (+62) 21-7983666
Email: customer.service@sucofindo.co.id
Whatsapp: (+62) 811 8910 222

CENTRAL LABORATORY

SBU Laboratorium Cibitung
Jl. Arteri Tol Cibitung No. 1,
Cibitung-Bekasi 17520
Phone: (+62-21) 88321176
Email: Bekasi@sucofindo.co.id

BALIKPAPAN

Jl. Jend. A. Yani No. 1 Cunung Sari Ulu,
Balikpapan 76122, Kalimantan Timur
Phone: (+62-542) 73218618
Email: Balikpapan@sucofindo.co.id

TANAH GROGOT

Desa Janju Km. 10, Tanah Merah Coal
Terminal Komplek PT Kideco Jaya Agung
Tanah Grogot, Kabupaten Paser 76211
Kalimantan timur
Email: tanahgrogot@sucofindo.co.id

BALIKPAPAN COAL TERMINAL

Teluk Tebang RT.009
Kelurahan Kariangau,
Kecamatan Balikpapan Barat,
Balikpapan - Kalimantan Timur

BANDAR LAMPUNG

Jl. Gatot Subroto No. 161 Bumi Raya,
Bumi Waras, Bandar Lampung 35228
Phone: (+62-721) 474660
Email: bandarlampung@sucofindo.co.id

TARAHAN

Komplek PT. Bukit Asam (Persero),
Jln. Raya Bakaheuni Km. 15, Tarahan,
Bandar Lampung
Email: tarahan@sucofindo.co.id

BANDUNG

Jl. Soekarno Hatta No.217, Bandung,
Jawa Barat 40233
Phone: (+62-22) 6030262
Email: Bandung@sucofindo.co.id

BANJARMASIN

Jl. A. Yani Km. 18.2 No. 238
Landasan Ulin Barat, Liang Anggang,
Kota Banjarbaru, Kalimantan Selatan 70723
Phone: (+62-511) 327108083
Email: banjarmasin@sucofindo.co.id

KELANIS

Jl. Cempaka No. 39 RT. 009 RW. 000
Tanjung, Tabalong,
Kalimantan Tengah 71512
Phone: (+62-526) 2091254
Email: kelanis@sucofindo.co.id

AMPAH

Jl. A. Yani Km. 2 RT 12
Desa Mungkur Juung, Barito Timur,
Kalimantan Tengah 73617
Phone: (+62-0522) 31904
Email: ampah@sucofindo.co.id

SAMPIT

Jl. Gatot Subroto No. 7A,
Kotawaringin Timur, Sampit,
Kalimantan Tengah 74321
Phone: (+62-541) 32390
Email: sampit@sucofindo.co.id

SUNGAI PUTING

Km. 0 Sungai Putting Coal Loading Port Fac
Sungai Putting, Candi Laras Utara, Tapin,
Kalimantan Selatan
Phone: (+62-511) 7334992
Email: sungaiputting@sucofindo.co.id

BATAM

Graha Sucofindo
Jl. Raden Patah No. 61, Balai Batam 29432,
Kepulauan Riau
Phone: (+62-778) 456575
Email: batam@sucofindo.co.id

TANJUNG PINANG

Jl. Adi Sucipto Km. 12 No 2 (Kijang)
KP Wono Sari RT 06 / RW XI, Kel Batu Sembilan
Tanjung Pinang
Phone: (+62-771) 441363
Email: cs.uptanjungpinang@sucofindo.co.id

KARIMUN

Jl. Lubuk Semut Kel. Lubuk Semut,
Kec. Karimun, Kab. Karimun,
Kepulauan Riau, 29661
Phone: (+62-777) 327375
Email: cs.karimun@sucofindo.co.id

BATULICIN

Jl. Damarpraja RT.07 RW 01 Desa Kersik Putih,
Tanah Bumbu, Batu Licin,
Kalimantan Selatan - 72171
Phone: (+62-518) 6076201 ext 20-7705608
Email: batulicin@sucofindo.co.id

SUNGAI DANAU

Jl. Provinsi Km. 162 Desa Sungai Cuka,
Kec. Satu, Kab. Tanah Bumbu, Kalsel 72275
Phone: (+62-511) 61193
Email: sungaidanau@sucofindo.co.id

INDONESIA BULK TERMINAL

Indonesia Bulk Terminal Pulau Laut,
Mekar Putih, Kab. Kota Baru, Kalimantan Selatan.
Phone: (+62-518) 33810 / 1
Email: IBT@sucofindo.co.id; sucofindo@ibt.co.id

BEKASI

Jl. Arteri Tol Cibitung No. 1,
Cibitung-Bekasi 17520
Phone: (+62-21) 88321176
Email: Bekasi@sucofindo.co.id

BENGKULU

Jl. R.E. Martadinata No 37,
RT 02 RW 02, Kel. Kandang, Kec.Kampung Melayu,
Bengkulu - 39215
Phone: (+62-736) 5611644
Email: bengkulu@sucofindo.co.id

PULAU BAAI

Jl. Ir. Rustandi, Pulau Baai,
Kota Bengkulu
Phone: (+62-736) 5611644
Email: pulaubaai@sucofindo.co.id

BONTANG

Jl. Jend. Sudirman No.11 Rt. 24, Tj. Laut, Bontang,
Kalimantan Timur 75321
Phone: (+62-548) 26281, 26282
Email: bontang@sucofindo.co.id

CILACAP

Jl. Soekarno Hatta No. 280,
Menganti - Kec Kesugihan, Cilacap,
Jawa Tengah
Phone: (+62-282) 540005
Email: cilacap@sucofindo.co.id

CILEGON

Jl. Jend. Achmad Yani No. 106, Kota Cilegon,
Banten 42421
Phone: (+62-254) 386444
Email: cilegon@sucofindo.co.id

SURALAYA

Unit Pelayanan Suralaya Sucofindo,
Jl. A Yani No 106 Cilegon - Banten 42421
Email: suralaya@sucofindo.co.id

CIREBON

Jl. Dr. Sudarsono No. 46 Cirebon 45134
Phone: (+62-231) 242284, 242285, 230808
Email: cs.crb@sucofindo.co.id

DENPASAR

Jl. Tukad Badung Banjar Kelod, Renon,
Kec. Denpasar Sel., Kota Denpasar,
Bali 80266
Phone: (+62-361) 241847
Email: Denpasar@sucofindo.co.id

LOMBOK

Jl. Lingkar Selatan ,Dasan Cermen,
Kec. Sandubaya, Kota Mataram,
Nusa Tenggara Bar. 83232
Phone: (+62-372) 8284385
Email: benete@sucofindo.co.id

BENETE

Jalan Kota Baru, Desa Dalam, RT. 002 / RW. 005
Kec. Taliwang, Kab. Sumbawa Barat
Phone: (+62-372) 8284385
Email: benete@sucofindo.co.id

SITE GEOTECHNICAL UP BENETE

Tongo, Sekongkang, Nusa Tenggara Barat
Email: siteaman@sucofindo.co.id

SITE SMELTER PRODUCT UP BENETE

Mantun, Maluk, Nusa Tenggara Barat
Email: siteaman@sucofindo.co.id

DUMAI

Jl. Dr. Wahidin No.31, Dumai 28814,
Riau
Phone: (+62-765) 31157
Email: Dumai@sucofindo.co.id

DURI

Jl. Tribata No. 5B, RT.02, RW. 10,
Kel. Duri Barat, Kec. Mandau, Kab. Duri,
Riau
Phone: (+62-765) 92323
Email: duri@sucofindo.co.id

JAKARTA

Jl. Cumi No. 33-35, Tanjung Priok
Jakarta 14310
Phone: (+62-21) 4304444
Email: Jakarta@sucofindo.co.id

TANGERANG

Jl. Raya Serang Km. 12,
Griya Idola Industrial Park Blok AA 10,
Bitung Jaya Cikupa
Phone: (+62-21) 59662184
Email: marketing.tangerang@sucofindo.co.id

JAMBI

Jl. Fatmawati No.25
Jambi 36141
Phone: (+62-741) 31200
Email: jambi@sucofindo.co.id

KENDARI

Jl. Pattimura No.58, Watulondo,
Kec. Puuwatu, Kota Kendari,
Sulawesi Tenggara. 93117
Email: kendari@sucofindo.co.id

MAKASSAR

Jl. Urip Sumoharjo No. 90 A,
Makassar 90232, Sulawesi Selatan
Phone: (+62-41) 451890, 451891, 451893
Email: makassar@sucofindo.co.id

MOROWALI

Jl. Trans Sulawesi, Keurea,
Kec. Bahodopi, Kabupaten Morowali,
Sulawesi Tengah, 94974
Email: up.morowali@sucofindo.co.id

MANADO

Jl. A.A Maramis, Kairagi I,
Mapanget, Kota Manado
Phone: (+62-43) 7247405
Email: manado@sucofindo.co.id

PALU

Jl. R.A. Kartini No 51 A, Palu,
Sulawesi Tengah
Phone: (+62-451) 411243 / 422858
Email: palu@sucofindo.co.id

AMBON

Jl. Dr. JA Latumenten No 5, RT 001/RW 002
Kel. Waihaong, Kee. Nusaniwe,
Kota Ambon, Maluku
Email: ambon@sucofindo.co.id

WEDA

Desa Nur Weda Kecamatan Weda.
Kabupaten Halmahera Tengah
Maluku Utara
Email: weda@sucofindo.co.id

BULI

Jl. Trans Halmahera, Desa Geltoli, Kec. Maba,
Kabupaten Halmahera Timur,
Maluku Utara 97862
Email: buli@sucofindo.co.id

MALUKU UTARA

Jl. Trans Halmahera, Kel. Guraping, Kec. Oba Utara,
Kota Tidore Kepulauan,
Kab. Maluku Utara 97852
Email: fahrian.andra@sucofindo.co.id

EKOR

Site Maba PT. Position, Soa Sangaji, Kec. Kota Maba,
Kabupaten Halmahera Timur, Maluku Utara

MEDAN

Jl. Jend. Gatot Subroto Km. 5,5 No. 105,
Medan, Sumatera Utara 20122
Phone: (+62-61) 8451880
Email: medan@sucofindo.co.id

LHOKSEUMAWE

Jl. Panglatah No. 3 Lhoksumawe 24351
Phone: (+62-645) 48091
Email: lhoksumawe@sucofindo.co.id

PADANG

Jl. Raya Bypass Km. 19,5
Kel. Balai Gadang Koto Panjang
Kec. Koto Tangah, Padang. 25171
Sumatera Barat
Phone: (+62751) 443100, 443509
Email: padang@sucofindo.co.id

KILIRANJAO

Jl. Kiliranjao Taluk Kuantan,
Sungai Tambang,
Kenagarian Kunungan Parit Rantang,
Kec. Kamang Baru, Kab. Sijunjung,
Sumatera Barat
Email: kiliranjao@sucofindo.co.id

PALEMBANG

Jl. Soekarno Hatta No. 1901
Kec. Alang-Alang Lebar Kel. Karya Baru.
Palembang, Sumatera Selatan, 30151
Phone: (+62711) 312990
Email: Palembang@sucofindo.co.id

PANGKAL PINANG

Jl. Linggar Jati No 22 Pangkal Pinang,
Kep. Bangka Belitung 33126
Phone: (+62-717) 431551, 424139
Email: pangkalpinang@sucofindo.co.id

LAHAT

Jl. Seruni No. 35 RT 19 RW 06,
Bandar Jaya Kecamatan Lahat,
Lahat, Sumatera Selatan
Phone: (+62-731) 326981
Email: lahat@sucofindo.co.id

MUNTOK

Jl. Peleburan Gg. Cek Daud No. 74
Kel Sungai Baru, Kec. Muntok
Email: muntok@sucofindo.co.id

BELITUNG

Jl. Gaparman No. 21 Air Ketekok,
Belitung - Tanjung Pandan
Email: belitung@sucofindo.co.id

PEKANBARU

Jl. Jend. A. Yani No. 79,
Pekanbaru, Riau 28115
Phone: (+62-761) 36042, 37759,35681
Email: pekanbaru@sucofindo.co.id

PONTIANAK

Jl. Arteri Supadio Km. 12,5, Arang Limbung,
Sei. Raya, Kab. Kubu Raya - Kalimantan Barat
Phone: (+62-534) 733334, 748748
Email: pontianak@sucofindo.co.id

KENDAWANGAN

Jl. Gajah Mada No. 130 Kec Delta Pawan
Kab. Ketapang, Kalimantan Barat - 78813
Phone: (+62-534) 70120
Email: kendawangan@sucofindo.co.id

PANGKALAN BUN

Jl. Nantai Arahan RT. 14 Kel. Baru,
Kec. Arut Selatan, Kab. Kotawaringin Barat.
Pangkalan Bun, Kalimantan Tengah 74112.
Phone: (+62-534) 2030373
Email: pangkalanbun@sucofindo.co.id

SAMARINDA

Jl. Teuku Umar No 65 Rt 26
Kelurahan Karang Asam Ulu, Samarinda,
Kalimantan Timur 75126
Phone: (+62-541) 6293771-4
Email: samarinda@sucofindo.co.id

DONDANG

Jl. Pelita RT. 02, Dondang, Kec. Muara Jawa,
Kab. Kutai Kertanegara 75265
Email: dondang@sucofindo.co.id

MUARA BADAK

Jl. K.H. Dewantara No. 32 RT 029
Desa Badak Baru Kecamatan Muara Badak,
Kabupaten Kutai Kartanegara, Kalimantan Timur
Phone: (+62-541) 4107168
Email: muarabadak@sucofindo.co.id

SANGATTA

Jl. Parikesit Road 9 (depan kantor KNE),
Sangatta, Kalimantan Timur
Phone: (+62-549) 525213
Email: sangatta@sucofindo.co.id

SANGKULIRANG

Jl. Soekarno Hatta, Sempayau,
Sangkulirang, Kutai Timur,
Kalimantan Timur
Email: sangkulirang@sucofindo.co.id

TANJUNG BARA

P12 Building KPC Mine Site
Tanjung Bara, Sangatta, Kutai Timur,
Kalimantan Timur
Email: tanjungbara@sucofindo.co.id

SEMARANG

Jl. Pemuda No.171, Sekayu,
Kec. Semarang Tengah, Kota Semarang,
Jawa Tengah 50132
Phone: (+62-24) 6590547, 3516616
Email: Semarang@sucofindo.co.id

SEMARANG LABORATORIUM

Jl. Kaligawe Raya No.900, Sriwulan,
Banjardowo, Kec. Genuk,
Kota Semarang, Jawa Tengah 50117
Email: lab.smg@sucofindo.co.id

SURAKARTA

Jl. Adi Sucipto No. 133,
Surakarta, Jawa Tengah 57145
Phone: (+62-271) 725279, 725280, 721006
Email: surakarta@sucofindo.co.id

KUDUS

Jl. Ronggolawe No.18, RT.01/RW.01,
Kudus, Jawa Tengah 59343
Phone: (+62-291) 438211, 430122, 438211
Email: kudus@sucofindo.co.id

SURABAYA

Jl. Kalibutih No. 215,
Surabaya, Jawa Timur 60173
Phone: (+62-31) 5469123
Email: surabaya@sucofindo.co.id

GRESIK

Jl. Dr. Wahidin Sudiro Husodo No. 156,
Gresik, Jawa Timur 61221
Phone: (+62-31) 3983195, 3979926, 3975603
Email: Gresik@sucofindo.co.id

SURABAYA LABORATORIUM

Jl. Ahmad Yani No. 315,
Surabaya, Jawa Timur 60234
Phone: (+62-31) 8470547
Email: labsurabaya@sucofindo.co.id

TARAKAN

Jl. Cahaya Baru RT.02 No. 104,
Kel. Karang Harapan,
Tarakan, Kalimantan Utara 7718
Phone: (+62-551) 202 6645
Email: tarakan@sucofindo.co.id

BERAU

Jl. Gunung Panjang RT. 01 Tanjung Redeb,
Berau, Kalimantan Timur
Phone: (+62-554) 2028134
Email: berau@sucofindo.co.id

SESAYAP

PT. Mandiri Intiperkasa Sei Krassi,
Sembakung, Nunukan, Kalimantan Utara
Email: sesayap@sucofindo.co.id

SEBAKIS

- PT Nunukan Bara Sentosa Satu,
Sebakis, Kab. Nunukan, Kalimantan Utara
- PT Central Cipta Murdaya,
Sebakis, Kab. Nunukan, Kalimantan Utara

LATI

PT Berau Coal, Kampung Sambakungan,
Kec. Gunung Tabur, Kab. Berau,
Kalimantan Timur
Phone: (+62-554) 2028134
Email: lati@sucofindo.co.id

SUARAN

PT Berau Coal, Kampung Suaran,
Kec. Sambaliung, Kab. Berau,
Kalimantan Timur
Phone: (+62-554) 2028134
Email: suaran@sucofindo.co.id

BUNYU

PT Lamindo Intermultikon, Pulau Bunyu,
Kab. Bulungan, Kalimantan Utara
Email: bunyu@sucofindo.co.id

TIMIKA

Light Industrial Park Kav. D-1
Jl. Kuala Kuningan, Kuala Kencana,
Timika Papua 99968
Phone: (+62-901) 301222, 301951, 301952
Email: timika@sucofindo.co.id

SORONG

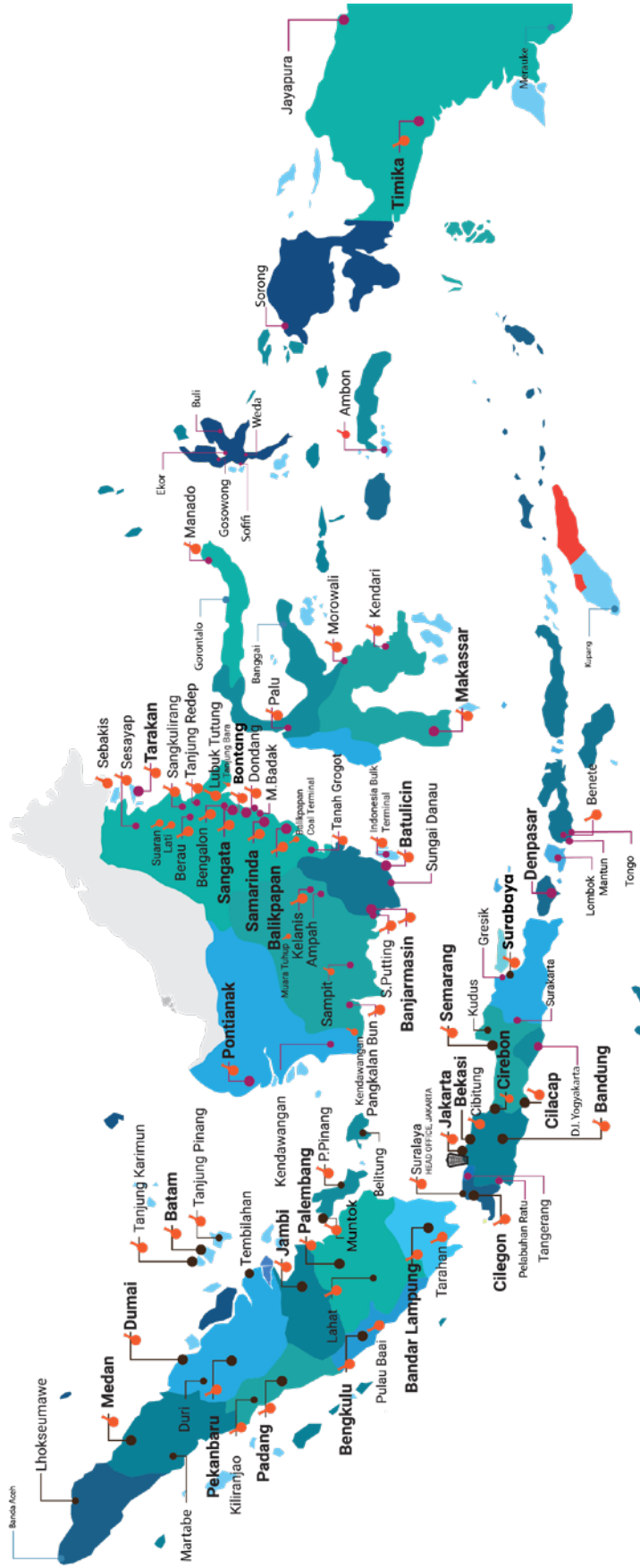
Jl. Maleo No. 17, Kota Sorong,
Provinsi Papua Barat Daya 98416
Email: sorong@sucofindo.co.id

JAYAPURA

Jl. Raya Waena Sentani Km. 18,
Distrik Heram, Kota Jayapura - Papua
Email: jayapura@sucofindo.co.id

PETA LAYANAN

Service Point Map



92

Service Point

68

Laboratory



GRAHA SUCOFINDO

Jl. KH. Guru Amin No.Kav. 34, RT.4/RW.1,
Kel. Pancoran, Kec. Pancoran,
Kota Jakarta Selatan,
Daerah Khusus Ibukota Jakarta 12780



HOTLINE CUSTOMER SERVICE

0811 8910 222

Telp. (+62-21) 798 3666 Ext : 1116, 1124

customer.service@sucofindo.co.id

www.sucofindo.co.id